

VOR/DME BIE 110.6 Chan 43	APP CRS 176°	Rwy Idg 5602 TDZE 1324 Apt Elev 1324
---	------------------------	---

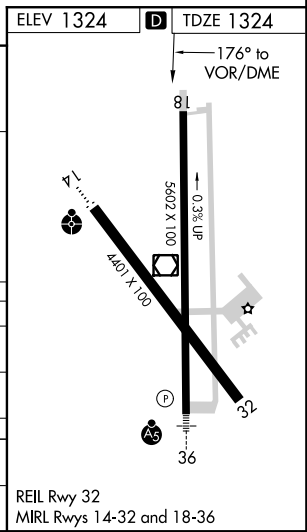
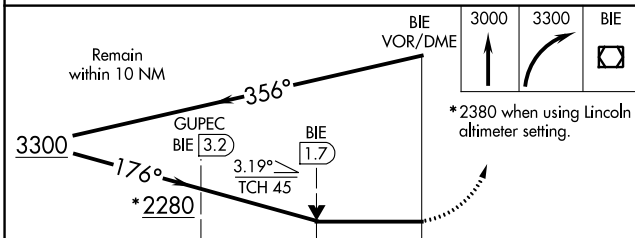
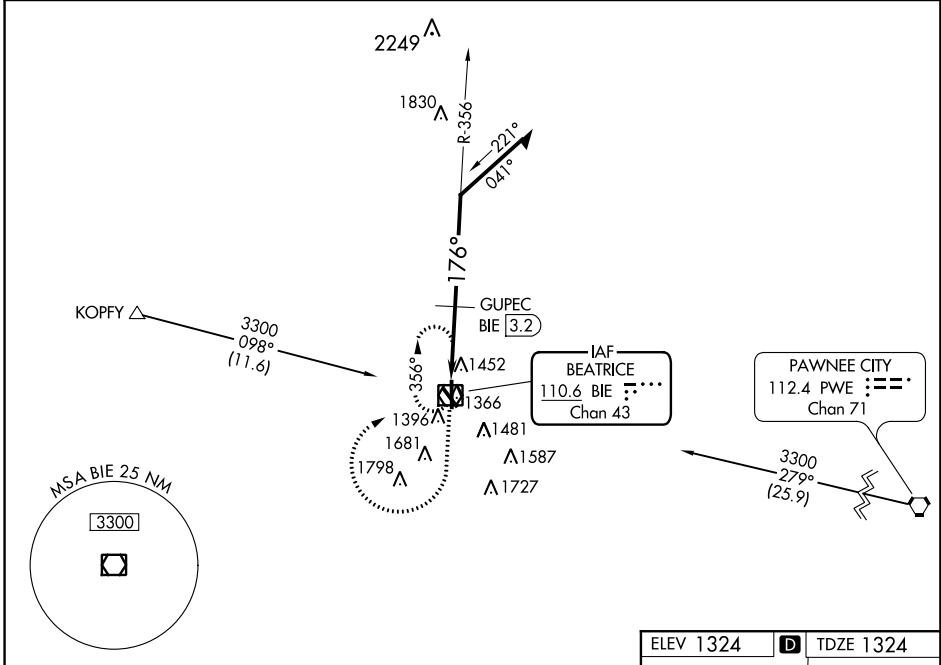
VOR RWY 18

BEATRICE MUNI (BIE)

⚠ Helicopter visibility reduction below $\frac{3}{4}$ SM NA. VDP NA with Lincoln altimeter setting.
⚠ Cat D straight-in minimums NA when using Lincoln altimeter setting. When local altimeter setting not received, use Lincoln altimeter setting and increase all MDA 100 feet.
 Increase GUPEC fix minimums S-18 Cat C/D visibility $\frac{1}{4}$ mile and Circling Cat D $\frac{1}{2}$ mile.

MISSED APPROACH: Climb to 3000 then climbing right turn to 3300 direct BIE VOR/DME and hold.

AWOS-3 125.325	MINNEAPOLIS CENTER 126.4 317.7	COLUMBUS RADIO 122.5	UNICOM 122.8 (CTAF) 0
--------------------------	--	--------------------------------	--



CATEGORY	A	B	C	D
S-18	2280-1¼ 956 (1000-1¼)	2280-1½ 956 (1000-1½)	2280-3	956 (1000-3)
CIRCLING	2280-1¼ 956 (1000-1¼)	2280-1½ 956 (1000-1½)	2280-3	956 (1000-3)
GUPEC FIX MINIMUMS				
S-18	1760-1	436 (500-1)	1760-1¼	436 (500-1¼)
CIRCLING	1820-1	496 (500-1)	1820-1½ 496 (500-1½)	2060-2¼ 736 (800-2¼)

REIL Rwy 32
MIRL Rwy 14-32 and 18-36

NC-2, 04 JAN 2018 to 01 FEB 2018

NC-2, 04 JAN 2018 to 01 FEB 2018