

WAAS CH 58320 W32A	APP CRS 319°	Rwy Idg TDZE Apt Elev	4401 1312 1324
---------------------------------	------------------------	-----------------------------	---

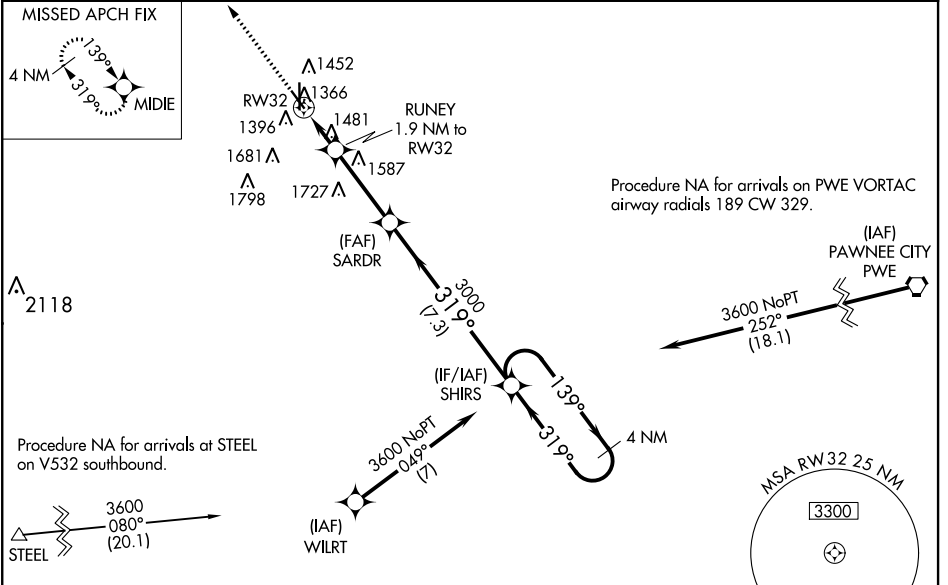
RNAV (GPS) RWY 32

BEATRICE MUNI (BIE)

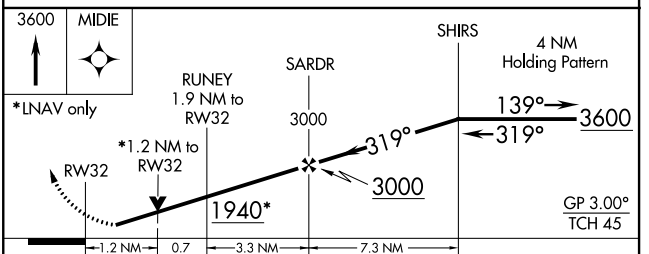
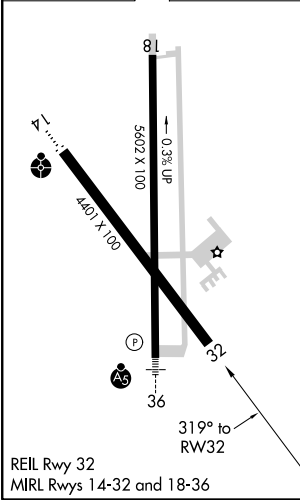
⚠ Baro-VNAV NA when using Lincoln altimeter setting. For uncompensated Baro-VNAV systems, LNAV/VNAV NA below -22°C (-7°F) or above 54°C (130°F). DME/DME RNP-0.3 NA.
⚠ Helicopter visibility reduction below 3/4 SM NA. VDP NA with Lincoln altimeter setting. When local altimeter setting not received, use Lincoln altimeter setting: increase LPV DA to 1660 feet, LNAV/VNAV DA to 1776 feet, visibility LPV all Cats 1/2 mile, LNAV/VNAV all Cats 3/8 mile; increase all MDA 100 feet and visibility LNAV Cats C/D 1/2 mile and Circling Cat D 1/2 mile.

MISSED APPROACH:
Climb to 3600 direct MIDIE and hold.

AWOS-3 125.325	MINNEAPOLIS CENTER 126.4 317.7	COLUMBUS RADIO 122.5	UNICOM 122.8 (CTAF) 0
--------------------------	--	--------------------------------	---------------------------------



ELEV 1324	D	TDZE 1312
-----------	----------	-----------



CATEGORY	A	B	C	D
LPV DA		1562-1	250 (300-1)	
LNAV/VNAV DA		1685-1½	373 (400-1½)	
LNAV MDA	1740-1	428 (500-1)	1740-1½	428 (500-1½)
CIRCLING	1820-1	496 (500-1)	1820-1½ 496 (500-1½)	2060-2½ 736 (800-2½)

NC-2, 04 JAN 2018 to 01 FEB 2018

NC-2, 04 JAN 2018 to 01 FEB 2018