

WAAS CH 42920 W18A	APP CRS 176°	Rwy Idg TDZE Apt Elev	5602 1324 1324
--	------------------------	-----------------------------	---

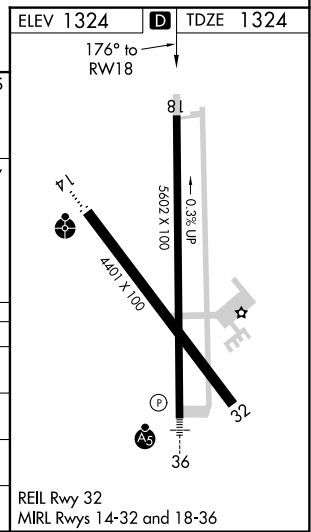
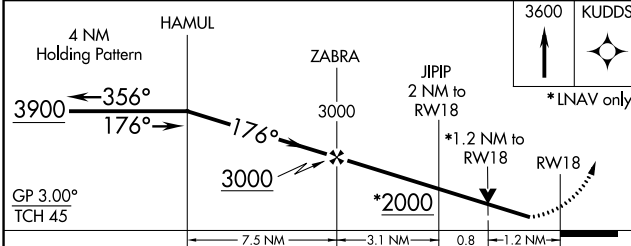
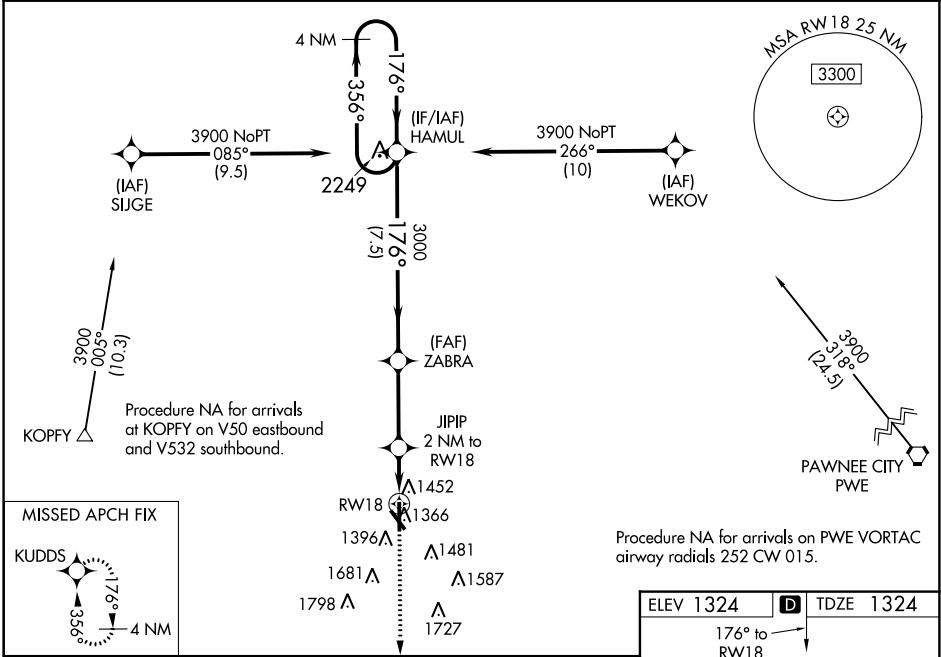
RNAV (GPS) RWY 18

BEATRICE MUNI (BIE)

⚠ Baro-VNAV NA when using Lincoln altimeter setting. For uncompensated Baro-VNAV systems, LNAV/VNAV NA below -17°C (2°F) or above 35°C (95°F). DME/DME RNP-0.3 NA.
⚠ Helicopter visibility reduction below 3/4 SM NA. VDP NA with Lincoln altimeter setting. When local altimeter setting not received, use Lincoln altimeter setting and increase all DA 91 feet and all MDA 100 feet. Increase LPV and LNAV/VNAV all Cats visibility 3/8 mile, LNAV Cat C/D visibility 1/4 mile, and Circling Cat D visibility 1/2 mile.

MISSED APPROACH:
Climb to 3600 direct KUDDUS and hold.

AWOS-3 125.325	MINNEAPOLIS CENTER 126.4 317.7	COLUMBUS RADIO 122.5	UNICOM 122.8 (CTAF) 0
--------------------------	--	--------------------------------	---------------------------------



CATEGORY	A	B	C	D
LPV DA		1574-3/4	250 (300-3/4)	
LNAV/VNAV DA		1663-1 1/8	339 (400-1 1/8)	
LNAV MDA	1760-1	436 (500-1)	1760-1 1/4	436 (500-1 1/4)
CIRCLING	1820-1	496 (500-1)	1820-1 1/2	2060-2 1/4
			496 (500-1 1/2)	736 (800-2 1/4)

NC-2, 04 JAN 2018 to 01 FEB 2018

NC-2, 04 JAN 2018 to 01 FEB 2018