


WAAS CH <b>69620</b> <b>W14A</b>	APP CRS <b>139°</b>	Rwy Idg TDZE Apt Elev	<b>4401</b> <b>1319</b> <b>1324</b>
--	------------------------	-----------------------------	---

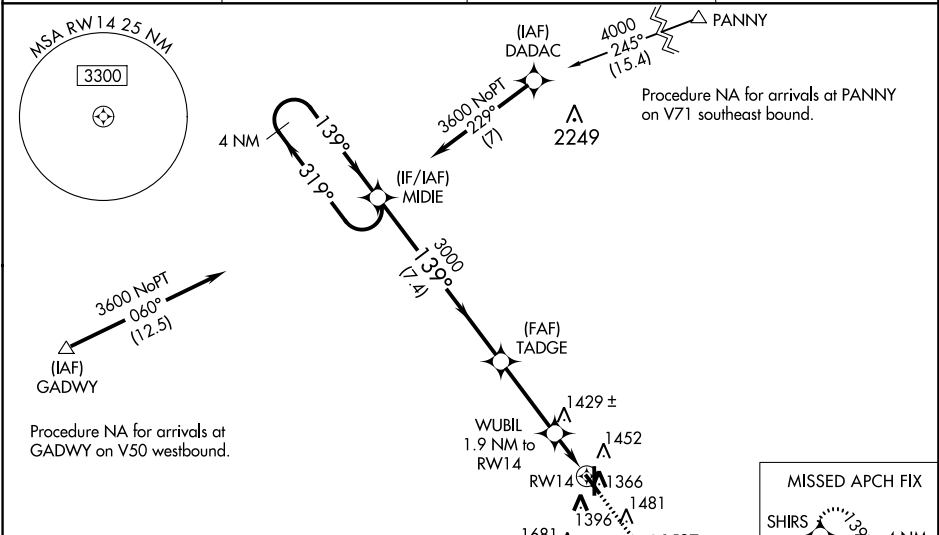
# RNAV (GPS) RWY 14

BEATRICE MUNI (BIE)

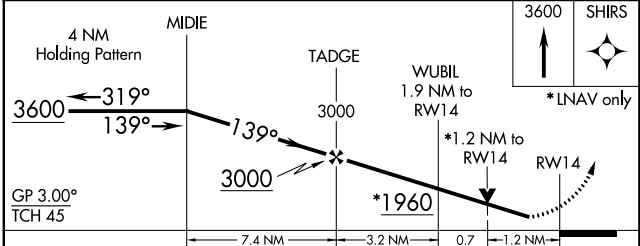
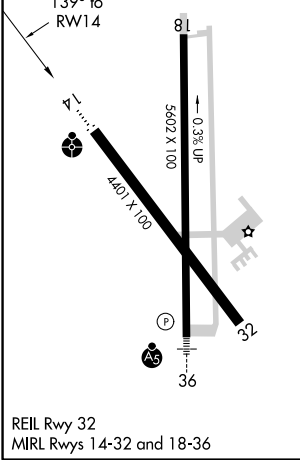
**⚠** Inoperative table does not apply to LPV, LNAV/VNAV and LNAV Cat A/B. For inop ODALS, increase LNAV Cat D visibility to 1 1/8 mile. Baro-VNAV NA when using Lincoln altimeter setting. For uncompensated Baro-VNAV systems, LNAV/VNAV NA below -17°C (2°F) or above 35°C (95°F). For inop ODALS when using Lincoln altimeter setting, increase LPV, LNAV/VNAV visibility to 1 1/8 mile and LNAV Cat D to 1 1/8 mile. DME/DME RNP-0.3 NA. VDP NA with Lincoln altimeter setting. When local altimeter setting not received, use Lincoln altimeter setting; increase LPV and LNAV/VNAV DA to 1660 feet; increase all MDA 100 feet and visibility LNAV Cats C/D 1/4 mile, Circling Cat C 1/8 mile and Cat D 1/2 mile. When using Lincoln altimeter setting, inoperative table does not apply to LNAV Cats A and B.

**ODALS**  
  
**MISSED APPROACH:**  
 Climb to 3600 direct SHIRS and hold.

AWOS-3 <b>125.325</b>	MINNEAPOLIS CENTER <b>126.4 317.7</b>	COLUMBUS RADIO <b>122.5</b>	UNICOM <b>122.8 (CTAF)</b> 
--------------------------	--	--------------------------------	---



ELEV 1324	<b>D</b>	TDZE 1319
-----------	----------	-----------



CATEGORY	A	B	C	D
LPV DA		1569-1	250 (300-1)	
LNAV/VNAV DA		1569-1	250 (300-1)	
LNAV MDA	1760-1	441 (500-1)	1760-1 1/8	441 (500-1 1/8)
CIRCLING	1820-1	496 (500-1)	1820-1 1/2 496 (500-1 1/2)	2060-2 1/4 736 (800-2 1/4)

NC-2, 04 JAN 2018 to 01 FEB 2018

NC-2, 04 JAN 2018 to 01 FEB 2018