


| | | | |
|--|------------------------|-----------------------------|---|
| WAAS CH 45621 W23A | APP CRS 229° | Rwy Idg TDZE Apt Elev | 5998 183 187 |
|--|------------------------|-----------------------------|---|

RNAV (GPS) Z RWY 23

MORRISTOWN MUNI (MMU)

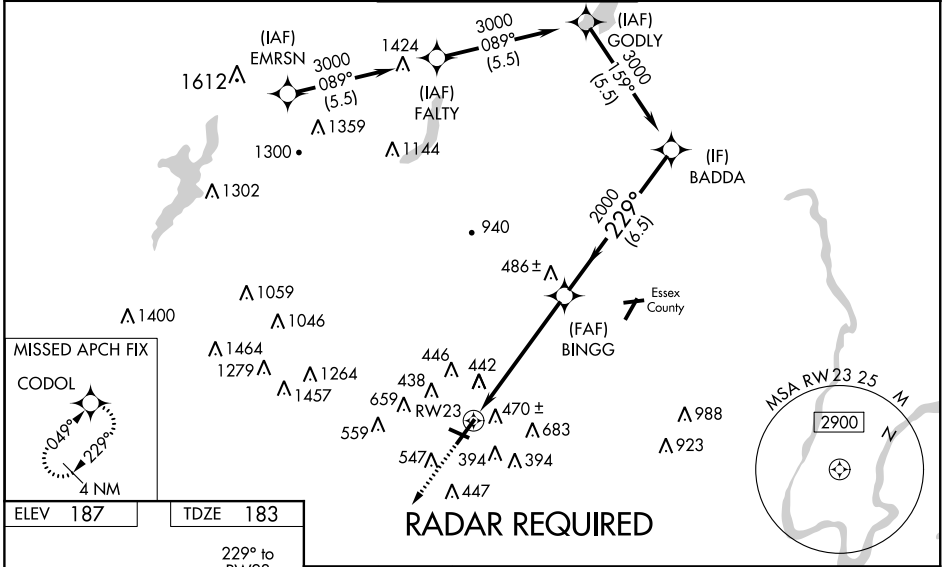
▼ For uncompensated Baro-VNAV systems, LNAV/VNAV below -15 °C (5°F) or above 54° C (130°F).
 ▲ For inop MALS, increase LNAV/VNAV all Cats visibility to 1½ SM and D visibility to 1½ mile. DME/DME RNP-0.3 NA. VDP and Baro-VNAV NA when using Newark Liberty Intl altimeter setting. Circling Rwy 13, 31 NA at night. Rwy 23 helicopter visibility reduction below 1 SM NA. For inop ALS, increase LNAV/VNAV all Cats visibility to 1½ SM, and LNAV Cat A/B to 1 SM, and Cat C/D to 1½ SM. For inop ALS when using Newark Liberty Intl altimeter setting, increase LPV all Cats visibility to 1½ SM, and LNAV/VNAV all Cats to 2½ SM, and LNAV Cat A/B to 1 SM, and LNAV Cat C/D to 1½ SM. When local altimeter setting not received, use Newark Liberty Intl altimeter setting and increase LPV DA to 542 feet, and LNAV/VNAV DA to 809 feet, and LNAV/VNAV visibility ½ SM; increase all MDAs 60 feet and LNAV visibility Cat C and D ½ SM.

MALS R



MISSED APPROACH:
Climb to 2000 direct
CODOL and hold.

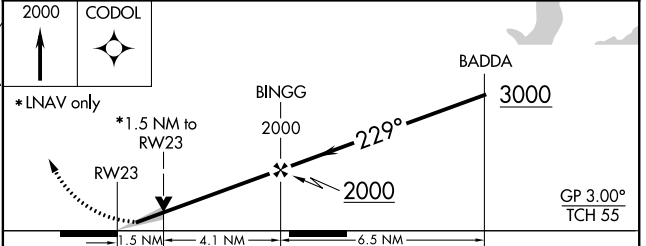
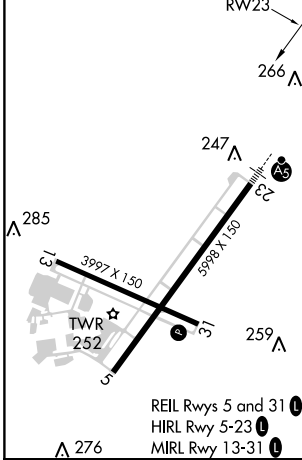
| | | | | |
|-----------------------|--|--|-------------------------|--------------------------|
| ATIS 124.25 | NEW YORK APP CON 127.6 379.9 | MORRISTOWN TOWER ★ 118.10 (CTAF) 353.9 | GND CON 134.2 | CLNC DEL 128.6 |
|-----------------------|--|--|-------------------------|--------------------------|



MISSED APCH FIX
CODOL

4 NM
229°

| | |
|----------|----------|
| ELEV 187 | TDZE 183 |
|----------|----------|



| CATEGORY | A | B | C | D |
|--------------|----------------------|----------------------|-------------------------|-------------------------|
| LPV DA | | 488-½ | 305 (400-½) | |
| LNAV/VNAV DA | | 755-1½ | 572 (600-1½) | |
| LNAV MDA | 700-¾ | 517 (600-¾) | 700-1 | 517 (600-1) |
| CIRCLING | 860-1 673 (700-1) | 900-1 713 (800-1) | 1000-2½ 813 (900-2½) | 1200-3 1013 (1100-3) |

NE-2, 04 JAN 2018 to 01 FEB 2018

NE-2, 04 JAN 2018 to 01 FEB 2018