

LOC I-MMU 110.3	APP CRS 229°	Rwy Idg TDZE Apt Elev	5998 183 187
---------------------------	------------------------	-----------------------------	---

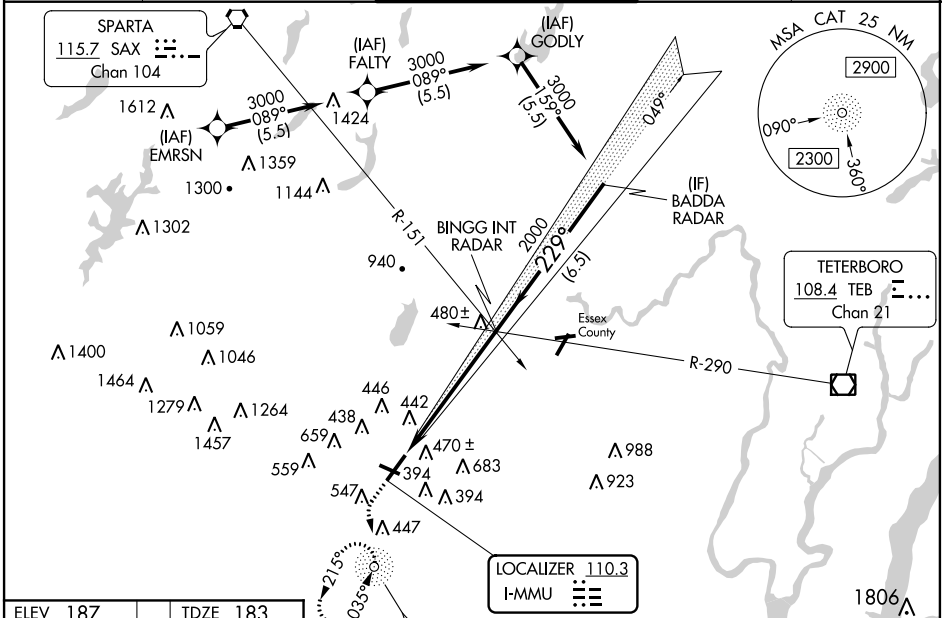
ILS or LOC RWY 23

MORRISTOWN MUNI (MMU)

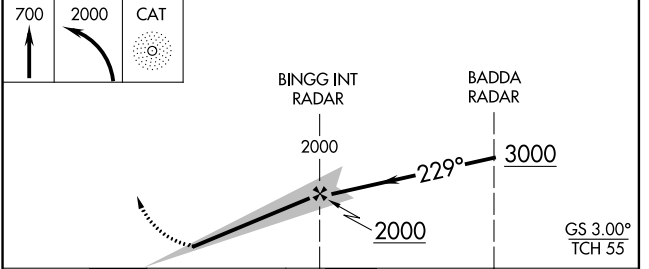
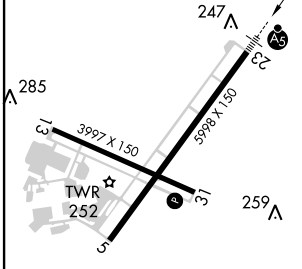
When local altimeter setting not received, use Newark Liberty Intl altimeter setting and increase all DA 54 feet and all MDA 60 feet; increase S-LOC 23 Cat C and D visibility 1/2 mile. Autopilot coupled approach NA below 732. ADF required. Rwy 23 helicopter visibility reduction below 1 SM NA. Rwy 13, 31 helicopter visibility reduction below 1 SM NA. Circling Rwy 13, 31 NA at night. For inop ALS, increase S-LOC 23 Cat A/B visibility to 1 SM. For inop ALS when using Newark Liberty Intl altimeter setting, increase S-ILS 23 all Cats visibility to 1 1/2 SM, and S-LOC 23 Cat A/B to 1 SM, and Cat C/D to 1 3/4 SM.

MALSR
 MISSED APPROACH: Climb to 700 then climbing left turn to 2000 direct CAT NDB and hold, continue climb-in-hold to 2000.

ATIS 124.25	NEW YORK APP CON 127.6 379.9	MORRISTOWN TOWER ★ 118.10 (CTAF) 353.9	GND CON 134.2	CLNC DEL 128.6
-----------------------	--	--	-------------------------	--------------------------



ELEV 187	TDZE 183
----------	----------



FAF to MAP 5.5 NM					
Knots	60	90	120	150	180
Min:Sec	5:30	3:40	2:45	2:12	1:50
CIRCLING	860-1 673 (700-1)	900-1 713 (800-1)	1000-2 1/2 813 (900-2 1/2)	1200-3 1013 (1100-3)	

NE-2, 04 JAN 2018 to 01 FEB 2018

NE-2, 04 JAN 2018 to 01 FEB 2018