

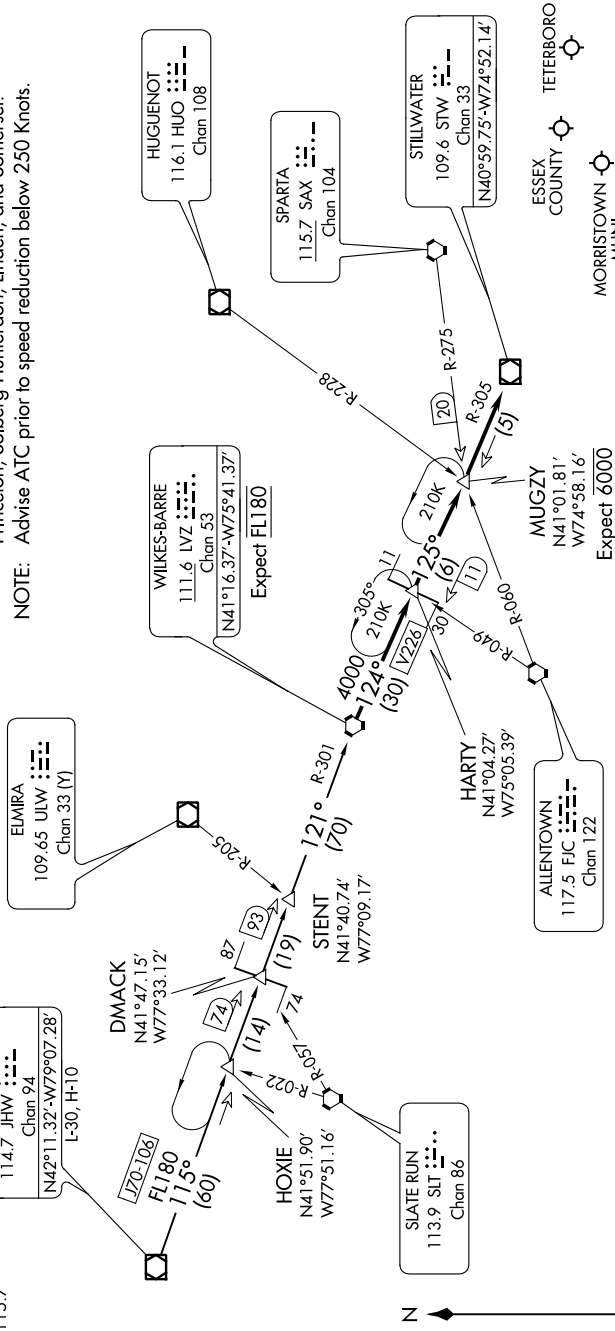
WILKES-BARRE FOUR ARRIVAL

TETERBORO, NEW JERSEY

NE-2, 04 JAN 2018 to 01 FEB 2018

NEW YORK APP CON
127.6 379.9
NEWARK D-ATIS
115.7

NOTE: This STAR applicable to all aircraft capable of 250 KIAS or greater landing at Teterboro, Morristown Muni, Essex County, Princeton, Solberg-Hunterdon, Linden, and Somerset.
NOTE: Advise ATC prior to speed reduction below 250 Knots.



ARRIVAL ROUTE DESCRIPTION

JAMESTOWN TRANSITION (JHW.LVZ4): From over JHW VOR/DME on JHW R-115 and LVZ R-301 to LVZ VORTAC. Thence

. from over LVZ VORTAC, on LVZ R-124 and STW R-305 to STW VOR/DME. Expect radar vectors to final approach course.

NOTE: Chart not to scale.

WILKES-BARRE FOUR ARRIVAL

TETERBORO, NEW JERSEY

NE-2, 04 JAN 2018 to 01 FEB 2018