

RNAV (GPS) RWY 22

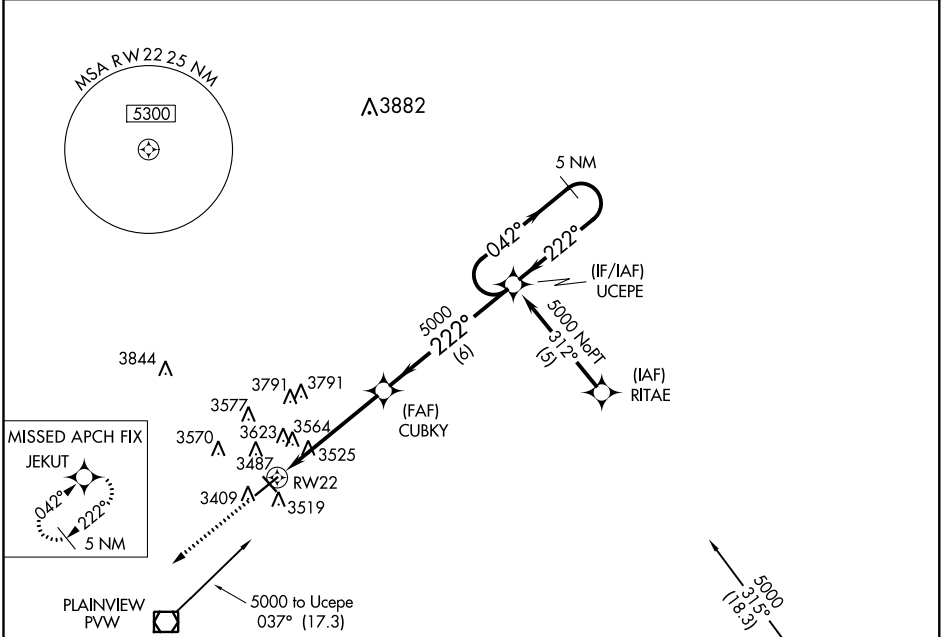
HALE COUNTY (PVW)

APP CRS 222°	Rwy Idg 5997
	TDZE 3373
	Apt Elev 3374

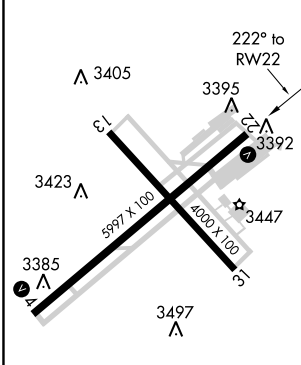
⚠ DME/DME RNP-0.3 NA. If local altimeter setting not received, use Lubbock altimeter setting and increase all MDAs 100 feet.
⚠ Visibility reduction by helicopters NA.

MISSED APPROACH: Climb to 5100 direct JEKUT and hold.

ASOS 119.675	LUBBOCK APP CON 119.2 351.8	CLNC DEL 121.7	UNICOM 123.0 (CTAF) 0
------------------------	---------------------------------------	--------------------------	---------------------------------



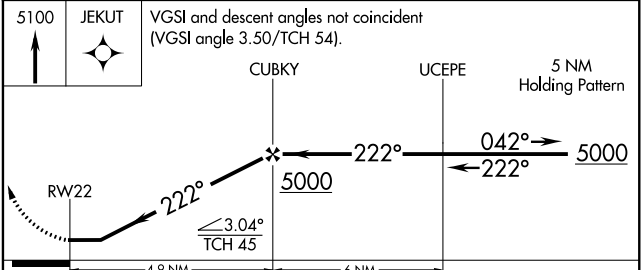
ELEV 3374	TDZE 3373
-----------	-----------



Procedure NA for arrivals at PVW VOR/DME via V81 southbound.

5100 JEKUT VGS1 and descent angles not coincident (VGS1 angle 3.50/TCH 54).

FLOYD



CATEGORY	A	B	C	D
LNAV MDA	3820-1	447 (500-1)	3820-1¼ 447 (500-1¼)	3820-1½ 447 (500-1½)
CIRCLING	3920-1 546 (600-1)	3940-1 566 (600-1)	3940-1½ 566 (600-1½)	3940-2 566 (600-2)

LIRL Rwy 13-31 0 and 4-22
REIL Rwy 4 and 22

SC-2, 04 JAN 2018 to 01 FEB 2018

SC-2, 04 JAN 2018 to 01 FEB 2018