

NDB UVA 281	APP CRS 328°	Rwy ldg TDZE Apt Elev	5256 933 942
-----------------------	------------------------	-----------------------------	---

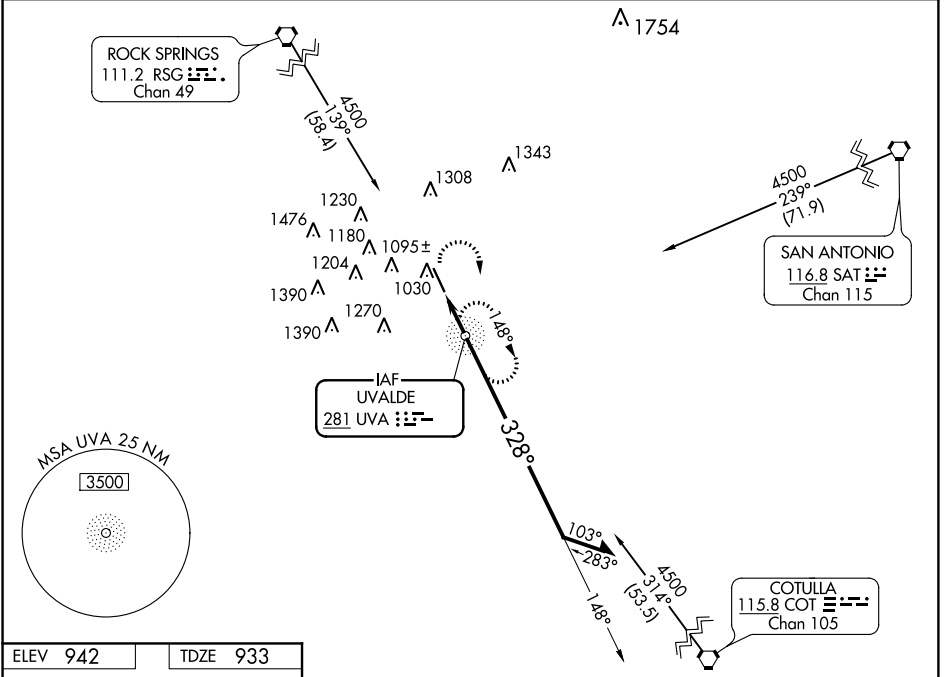
NDB RWY 33

GARNER FIELD (UVA)

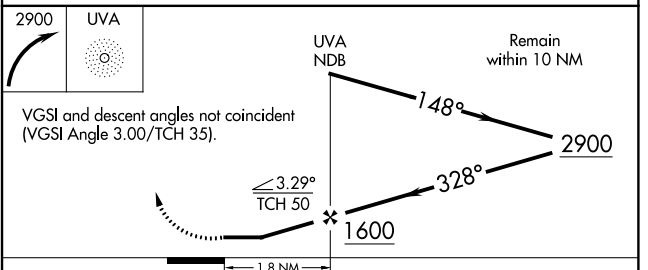
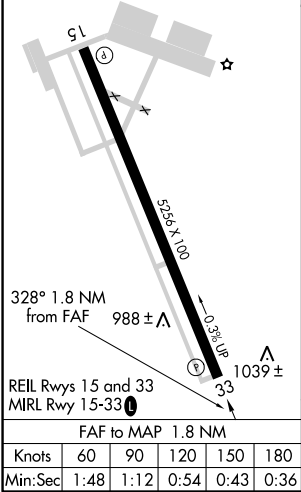
NA Obtain local altimeter setting on CTAF; when not received, use South Texas Rgnl at Hondo altimeter setting.

MISSED APPROACH: Climbing right turn to 2900 direct UVA NDB and hold.

AWOS-3 124.175	HOUSTON CENTER 134.95 269.4	UNICOM 122.8 (CTAF)
--------------------------	---------------------------------------	-------------------------------



ELEV 942	TDZE 933
----------	----------



CATEGORY	A	B	C	D
S-33	1340-1	407 (400-1)	1340-1/4	407 (400-1/4)
CIRCLING	1340-1 398 (400-1)	1460-1 518 (600-1)	1460-1 1/2 518 (600-1 1/2)	1500-2 558 (600-2)
SOUTH TEXAS REGIONAL AT HONDO ALTIMETER SETTING MINIMUMS				
S-33	1440-1	507 (500-1)	1440-1 1/2	507 (500-1 1/2)
CIRCLING	1440-1 498 (500-1)	1560-1 618 (700-1)	1560-1 3/4 618 (700-1 3/4)	1600-2 658 (700-2)

SC-3, 04 JAN 2018 to 01 FEB 2018

SC-3, 04 JAN 2018 to 01 FEB 2018