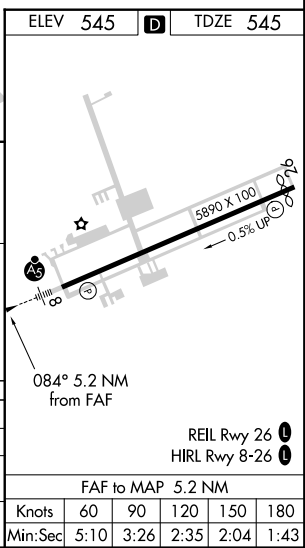
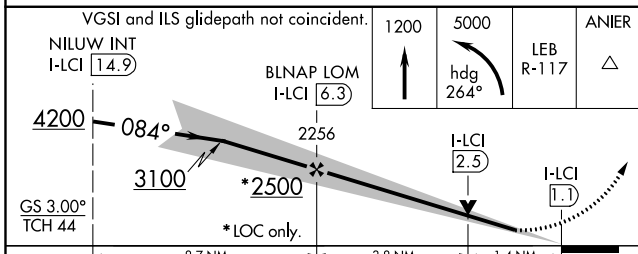
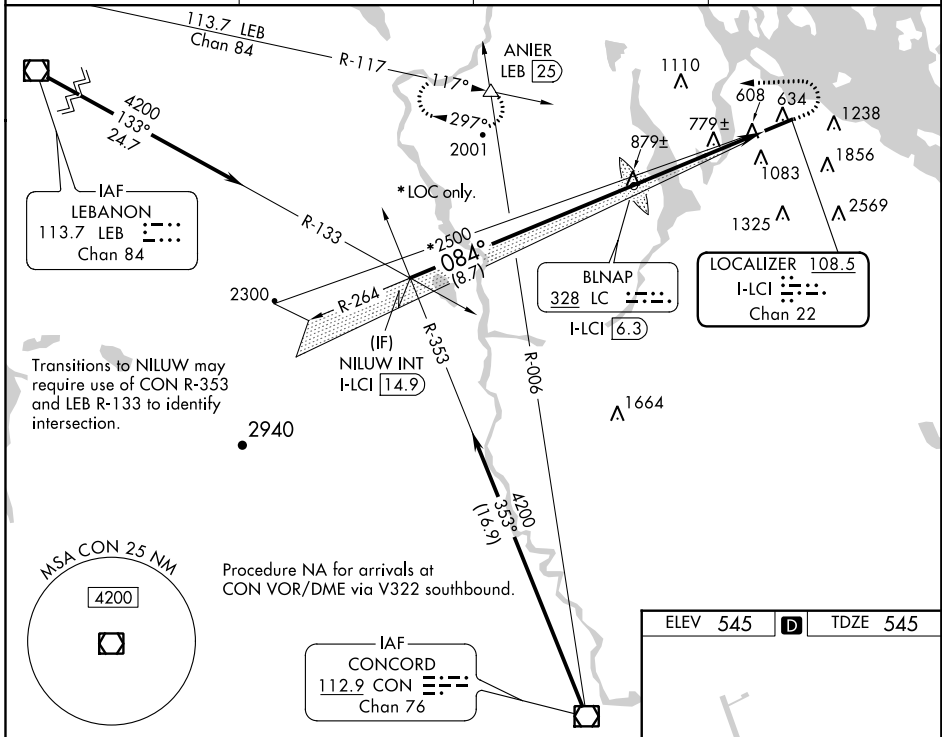


LOC/DME I-LCI 108.5 Chan 22	APP CRS 084°	Rwy Idg TDZE Apt Elev	5646 545 545
--	------------------------	-----------------------------	---

ILS or LOC RWY 8

LACONIA MUNI (LCI)

<p>⚠ VDP NA when using Concord altimeter setting. If local altimeter setting not received, use Concord altimeter setting and increase all DA/MDA 80 feet. For inop MALSRL increase S-ILS 8 all Cats visibility to 1 mile. Night landing Rwy 26 NA.</p>	<p>MALSRL</p>	<p>MISSED APPROACH: Climb to 1200 then climbing left turn to 5000 via heading 264° and LEB VOR/DME R-117 to ANIER INT/LEB 25 DME and hold, continue climb-in-hold to 5000.</p>	
<p>AWOS-3PT 133.525</p>	<p>BOSTON APP CON 134.75 254.25</p>	<p>CLNC DEL 119.85</p>	<p>UNICOM 123.0 (CTAF)</p>



CATEGORY	A	B	C	D
S-ILS 8	825-½		280 (300-½)	
S-LOC 8	1040-½	495 (500-½)	1040-¾ 495 (500-¾)	1040-1 495 (500-1)
CIRCLING	1420-1 875 (900-1)	1600-1½ 1055 (1100-1½)	1600-3 1055 (1100-3)	2160-3 1615 (1700-3)

NE-1, 04 JAN 2018 to 01 FEB 2018

NE-1, 04 JAN 2018 to 01 FEB 2018