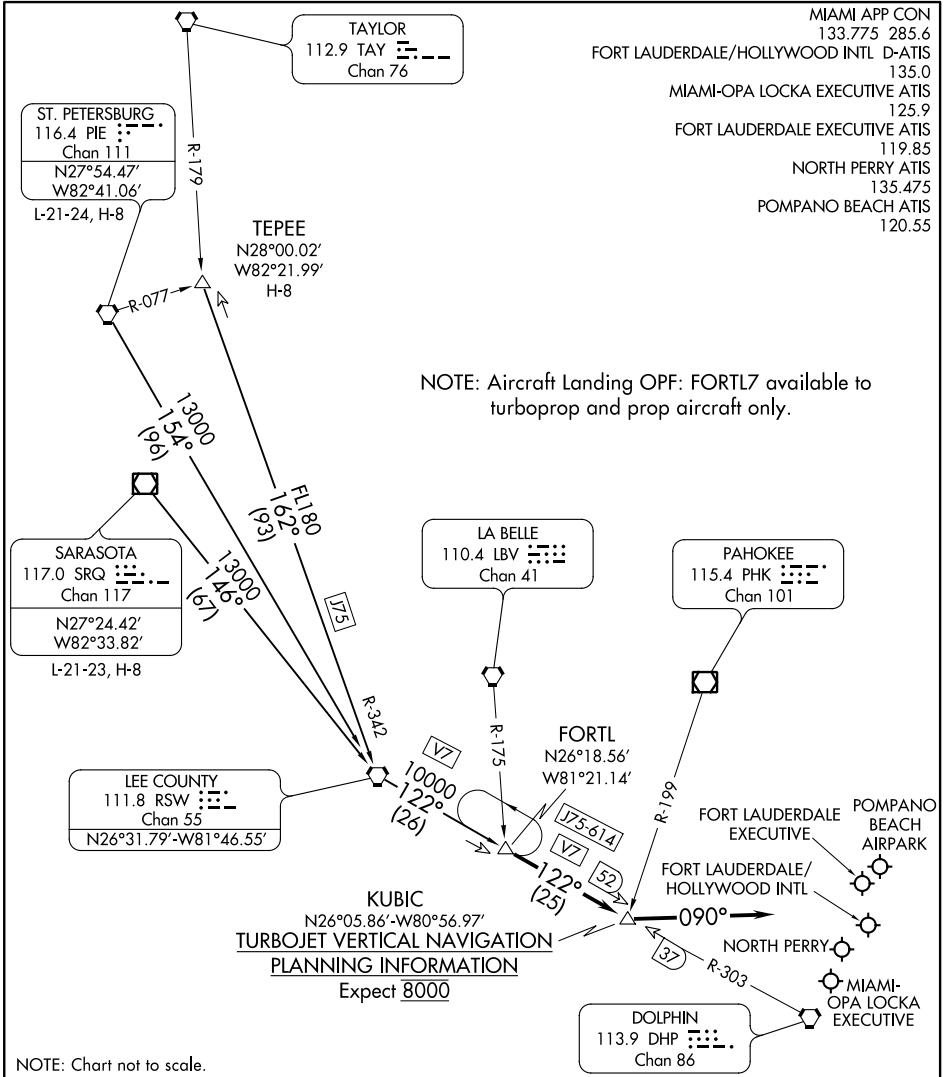


(FORTL.FORTL7) 17173

# FORTL SEVEN ARRIVAL

AL-744 (FAA)

FORT LAUDERDALE, FLORIDA



SE-3. 04 JAN 2018 to 01 FEB 2018

SE-3. 04 JAN 2018 to 01 FEB 2018

NOTE: Chart not to scale.

## ARRIVAL ROUTE DESCRIPTION

**ST. PETERSBURG TRANSITION (PIE.FORTL7):** From over PIE VORTAC on PIE R-154 to RSW VORTAC, then on RSW R-122 to FORTL INT. Thence. . . .

**SARASOTA TRANSITION (SRQ.FORTL7):** From over SRQ VOR/DME on SRQ R-146 to RSW VORTAC, then on RSW R-122 to FORTL INT. Thence. . . .

**TEPEE TRANSITION (TEPEE.FORTL7):** From over TEPEE INT on J75 and RSW R-342 to RSW VORTAC, then on RSW R-122 to FORTL INT. Thence. . . .

. . . . From over FORTL INT on RSW R-122 to KUBIC INT, then heading 090°.  
Expect RADAR vectors to final approach course.

# FORTL SEVEN ARRIVAL

(FORTL.FORTL7) 22JUN17

FORT LAUDERDALE, FLORIDA