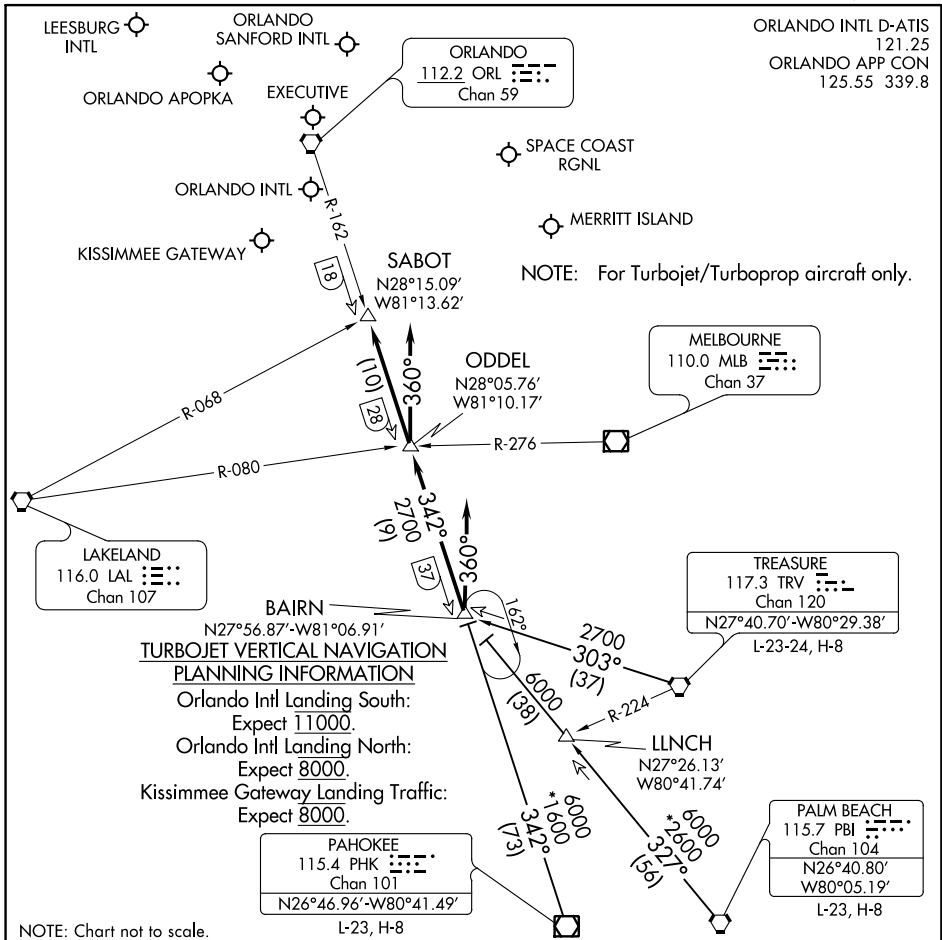


(BAIRN.GOOFY7) 17117

GOOFY SEVEN ARRIVAL

AL-571 (FAA)

ORLANDO, FLORIDA



SE-3, 04 JAN 2018 to 01 FEB 2018

SE-3, 04 JAN 2018 to 01 FEB 2018

ARRIVAL ROUTE DESCRIPTION

PAHOKEE TRANSITION (PHK.GOOFY7): From over PHK VOR/DME on PHK R-342 to BAI RN INT.

Thence . . .

PALM BEACH TRANSITION (PBI.GOOFY7): From over PBI VORTAC on PBI R-327 to BAI RN INT.

Thence . . .

TREASURE TRANSITION (TRV.GOOFY7): From over TRV VORTAC on TRV R-303 to BAI RN INT.

Thence . . .

ORLANDO INTL:

. . . Rwy 17/18: From over BAI RN INT on ORL VORTAC R-162 to ODDEL INT. Depart ODDEL INT heading 360° for vector to final approach course.

. . . Rwy 35/36: Depart BAI RN INT heading 360° for vector to final approach course.

LEESBURG INTL: . . . From over BAI RN INT on ORL VORTAC R-162 to SABOT INT. Expect RADAR vectors to the airport.

ALL OTHER AIRPORTS: . . . From over BAI RN INT on ORL VORTAC R-162 to SABOT INT.

Expect RADAR vectors to final approach course.

GOOFY SEVEN ARRIVAL

(BAIRN.GOOFY7) 27APR17

ORLANDO, FLORIDA