

# RNAV (RNP) Z RWY 35R

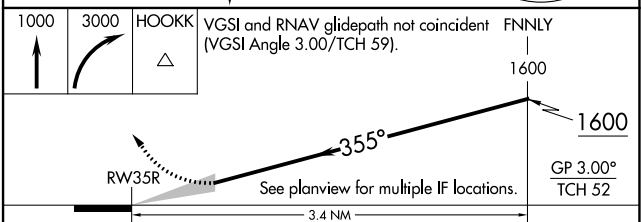
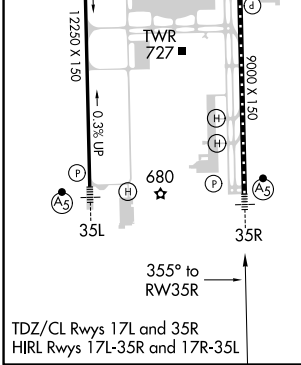
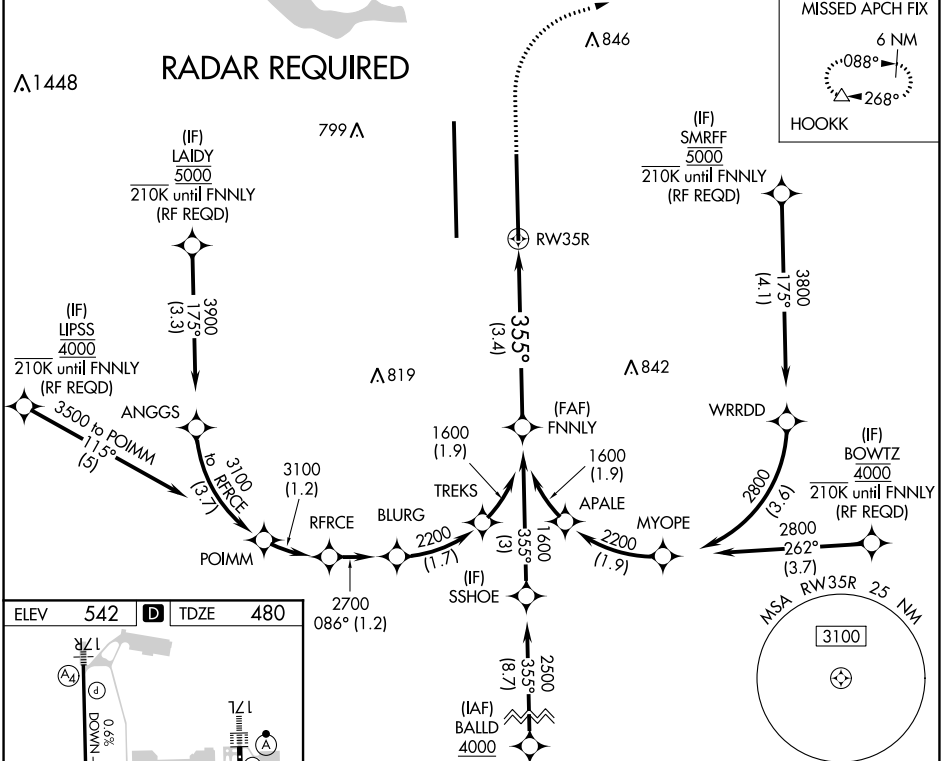
AUSTIN-BERGSTROM INTL (A US)

|             |          |             |
|-------------|----------|-------------|
| APP CRS     | Rwy Idg  | <b>9000</b> |
| <b>355°</b> | TDZE     | <b>480</b>  |
|             | Apt Elev | <b>542</b>  |

**▽** For uncompensated Baro-VNAV systems, procedure NA below -6°C (22°F) or above 54°C (130°F). Simultaneous approach authorized. GPS required. For inop ALS, increase RNP 0.11 all Cats visibility to RVR 4500.

**MISSED APPROACH:** Climb to 1000 then climbing right turn to 3000 direct HOOKK and hold.

|              |   |                    |                    |                    |       |
|--------------|---|--------------------|--------------------|--------------------|-------|
| D-ATIS       | AUSTIN APP CON  | AUSTIN TOWER       | GND CON            | CLNC DEL           | CPDLC |
| <b>124.4</b> | <b>127.225 317.65 (EAST)</b><br><b>120.875 270.25 (SOUTH)</b><br><b>119.0 370.85 (WEST)</b> | <b>121.0 281.5</b> | <b>121.9 348.6</b> | <b>125.5 263.0</b> |       |



|             |   |        |               |   |
|-------------|---|--------|---------------|---|
| CATEGORY    | A | B      | C             | D |
| RNP 0.11 DA |   | 751/24 | 271 (300-1/2) |   |
| RNP 0.16 DA |   | 873/45 | 393 (400-7/8) |   |
| RNP 0.30 DA |   | 951/60 | 471 (500-1/4) |   |

## AUTHORIZATION REQUIRED

SC-3, 04 JAN 2018 to 01 FEB 2018

SC-3, 04 JAN 2018 to 01 FEB 2018