

RNAV (RNP) Z RWY 17R

AUSTIN-BERGSTROM INTL (AUS)

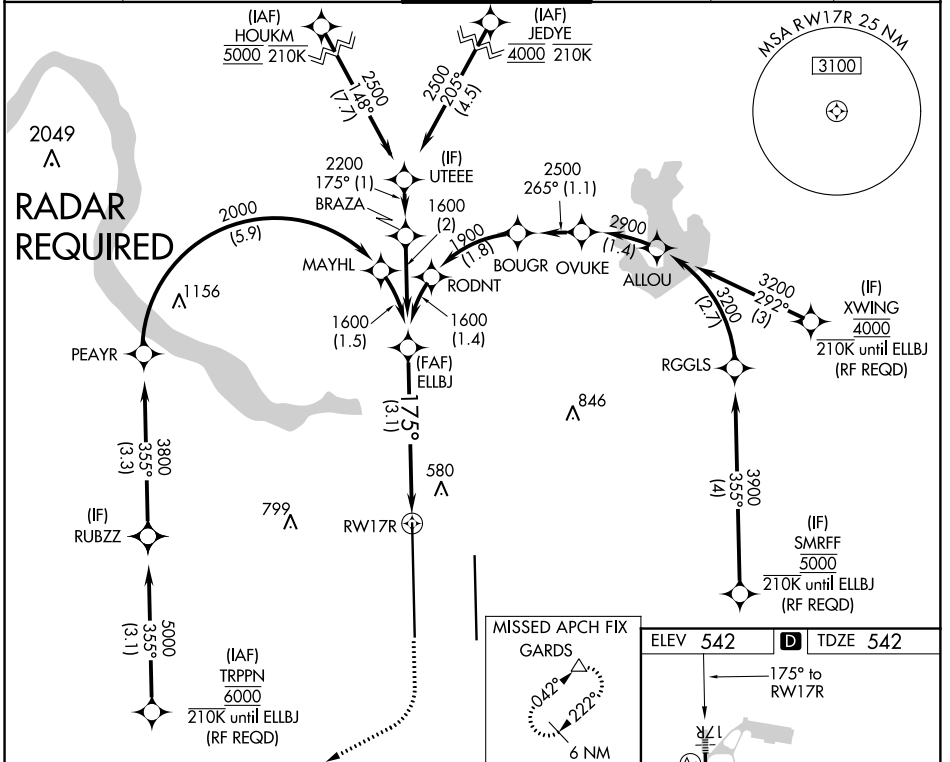
APP CRS	Rwy Idg	12250
175°	TDZE	542
	Apt Elev	542

For uncompensated Baro-VNAV systems, procedure NA below -6°C (22°F) or above 54°C (130°F). Simultaneous approach authorized. GPS required.

MALS

MISSED APPROACH: Climb to 1000 then climbing right turn to 3500 direct GARDS and hold.

D-ATIS	AUSTIN APP CON	AUSTIN TOWER	GND CON	CLNC DEL	CPDLC
124.4	127.225 317.65 (EAST) 120.875 270.25 (SOUTH) 119.0 370.85 (WEST)	121.0 281.5	121.9 348.6	125.5 263.0	

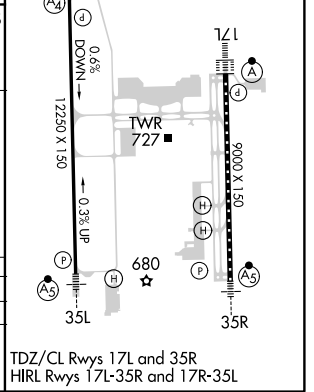
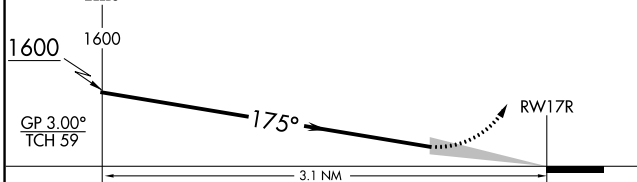


SC-3, 04 JAN 2018 to 01 FEB 2018

SC-3, 04 JAN 2018 to 01 FEB 2018

See planview for multiple IF locations.

1000	3500	GARDS



CATEGORY	A	B	C	D
RNP 0.30 DA		861/40	319 (400-¾)	

AUTHORIZATION REQUIRED

TDZ/CL Rwsy 17L and 35R
HIRL Rwsy 17L-35R and 17R-35L