

PALMS TWO DEPARTURE

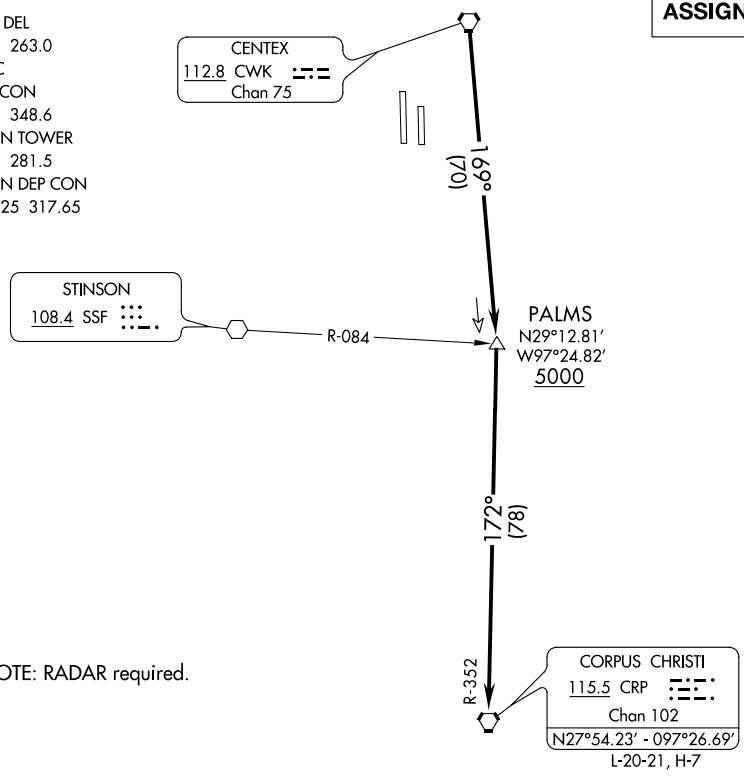
AL-556 (FAA)

AUSTIN-BERGSTROM INTL (AUS)

AUSTIN, TEXAS

D-ATIS
124.4
CLNC DEL
125.5 263.0
CPDLC
GND CON
121.9 348.6
AUSTIN TOWER
121.0 281.5
AUSTIN DEP CON
127.225 317.65

**TOP ALTITUDE:
ASSIGNED BY ATC**



NOTE: RADAR required.

TAKEOFF MINIMUMS

Rwys 17L/R: Standard.
Rwys 35L/R: Standard with minimum climb of 240' per NM to 2600.

NOTE: Chart not to scale.



DEPARTURE ROUTE DESCRIPTION

TAKEOFF RWYS 17L/R, 35L/R: Climb on assigned heading for vectors to CWK VORTAC, then on CWK R-169 to cross PALMS INT at or above 5000, then on CRP R-352 to CRP VORTAC. Maintain altitude assigned by ATC, expect filed altitude 10 minutes after departure.

SC-3, 04 JAN 2018 to 01 FEB 2018

SC-3, 04 JAN 2018 to 01 FEB 2018