

LOC/DME I-BSM 110.95 Chan 46 (Y)	APP CRS 355°	Rwy Idg TDZE 496 Apt Elev 542	12250
------------------------------------------------------	------------------------	---------------------------------------------------	--------------

ILS or LOC RWY 35L

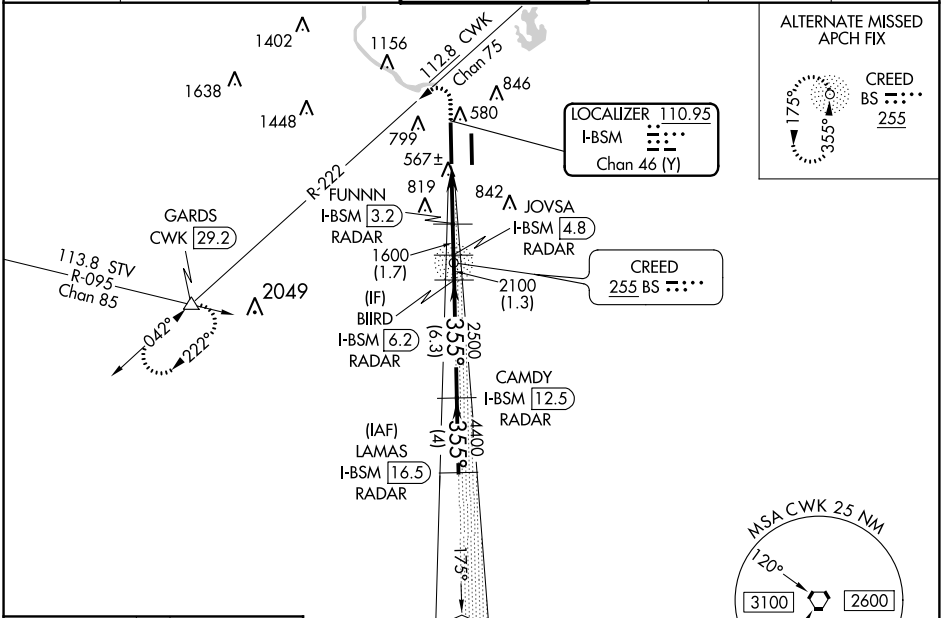
AUSTIN-BERGSTROM INTL (AUS)

Simultaneous approach authorized. For inop ALS, increase S-ILS 35L Cat E visibility to RVR 4000, S-LOC 35L Cats C/D/E visibility to RVR 5500. DME or RADAR required.

** RVR 1800 authorized with use of FD or AP or HUD to DA.

MALSR MISSED APPROACH: Climb to 1000 then climbing left turn to 3500 on heading 250° and CWK VORTAC R-222 to GARDS INT/CWK 29.2 DME and hold.

D-ATIS 124.4	AUSTIN APP CON 127.225 317.65 (EAST) 120.875 270.25 (SOUTH) 119.0 370.85 (WEST)	AUSTIN TOWER 121.0 281.5	GND CON 121.9 348.6	CLNC DEL 125.5 263.0	CPDLC
------------------------	---------------------------------------------------------------------------------------------------------------	------------------------------------	-------------------------------	--------------------------------	-------

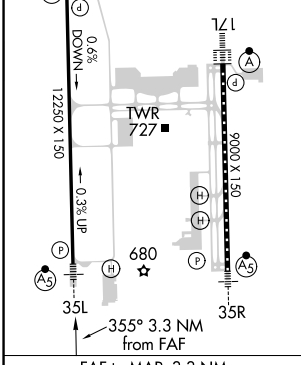


SC-3, 04 JAN 2018 to 01 FEB 2018

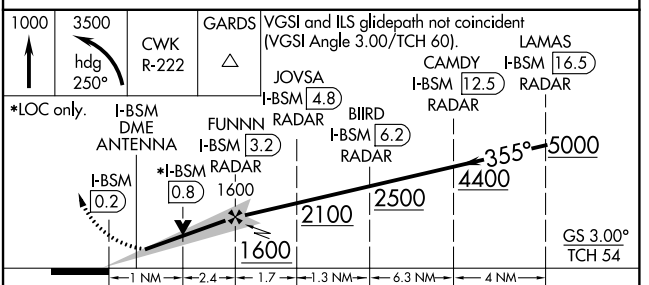
SC-3, 04 JAN 2018 to 01 FEB 2018

ELEV 542	D	TDZE 496
-----------------	----------	-----------------

HIRL Rwy 17L-35R and 17R-35L
TDZ/CL Rwy 17L and 35R



DME or RADAR REQUIRED



Category	A	B	C	D	E
S-ILS 35L**	696/24 200 (200-1/2)				
S-LOC 35L	860/24	364 (400-1/2)	860/40	364 (400-3/4)	
CIRCLING	1040-1 498 (500-1)	1100-1 558 (600-1)	1200-1 3/4 658 (700-1 3/4)	1200-2 658 (700-2)	1520-3 978 (1000-3)