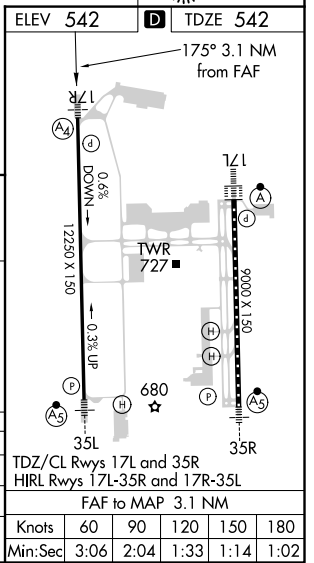
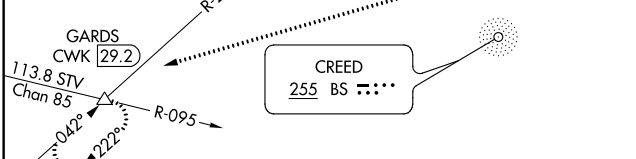
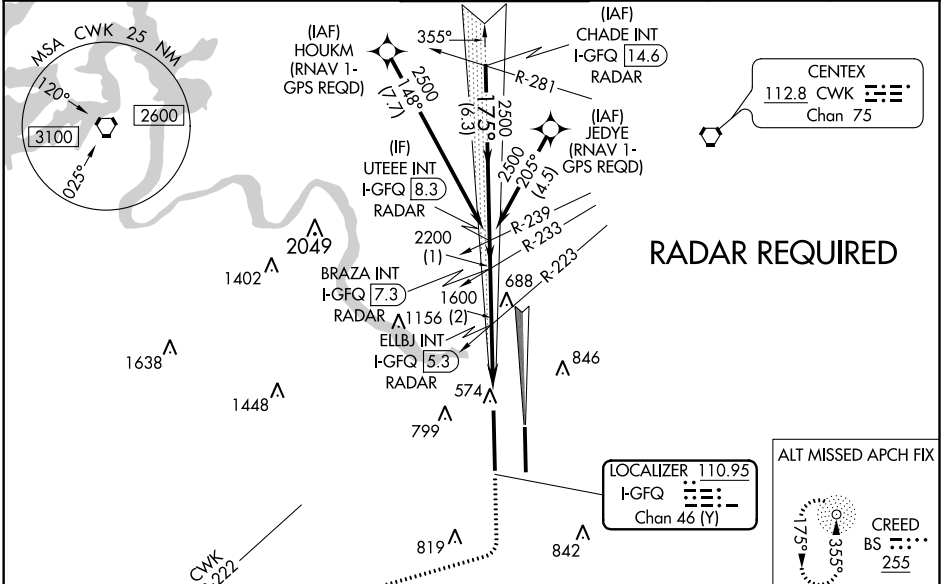


| | | |
|---|------------------------|--|
| LOC/DME I-GFQ 110.95 Chan 46(Y) | APP CRS 175° | Rwy Idg 12250 TDZE 542 Apt Elev 542 |
|---|------------------------|--|

ILS or LOC RWY 17R

AUSTIN-BERGSTROM INTL (AUS)

| | | | | | |
|--|---|------------------------------------|---|--------------------------------|-------|
| <p>Simultaneous approach authorized. For inop ALS, increase S-LOC 17R Cat C/D/E visibility to RVR 4500.</p> | | <p>MALS ④ =</p> | <p>MISSED APPROACH: Climb to 1000 then climbing right turn to 3500 on heading 250° and CWK VORTAC R-222 to GARDS INT/CWK 29.2 DME and hold.</p> | | |
| D-ATIS 124.4 | AUSTIN APP CON 127.225 317.65 (EAST) 120.875 270.25 (SOUTH) 119.0 370.85 (WEST) | AUSTIN TOWER 121.0 281.5 | GND CON 121.9 348.6 | CLNC DEL 125.5 263.0 | CPDLC |



| | | | | | |
|-----------|-----------------------|-----------------------|-------------------------|-----------------------|------------------------|
| CATEGORY | A | B | C | D | E |
| S-ILS 17R | | 742/40 | 200 (200-¾) | | |
| S-LOC 17R | | 840/40 | 298 (300-¾) | | |
| CIRCLING | 1040-1 498 (500-1) | 1100-1 558 (600-1) | 1200-1¼ 658 (700-1¼) | 1200-2 658 (700-2) | 1520-3 978 (1000-3) |

SC-3, 04 JAN 2018 to 01 FEB 2018

SC-3, 04 JAN 2018 to 01 FEB 2018