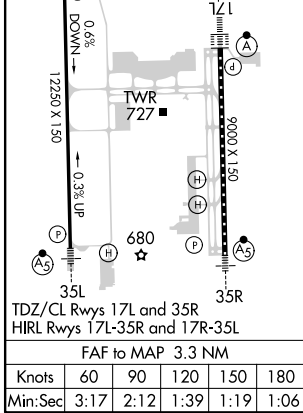
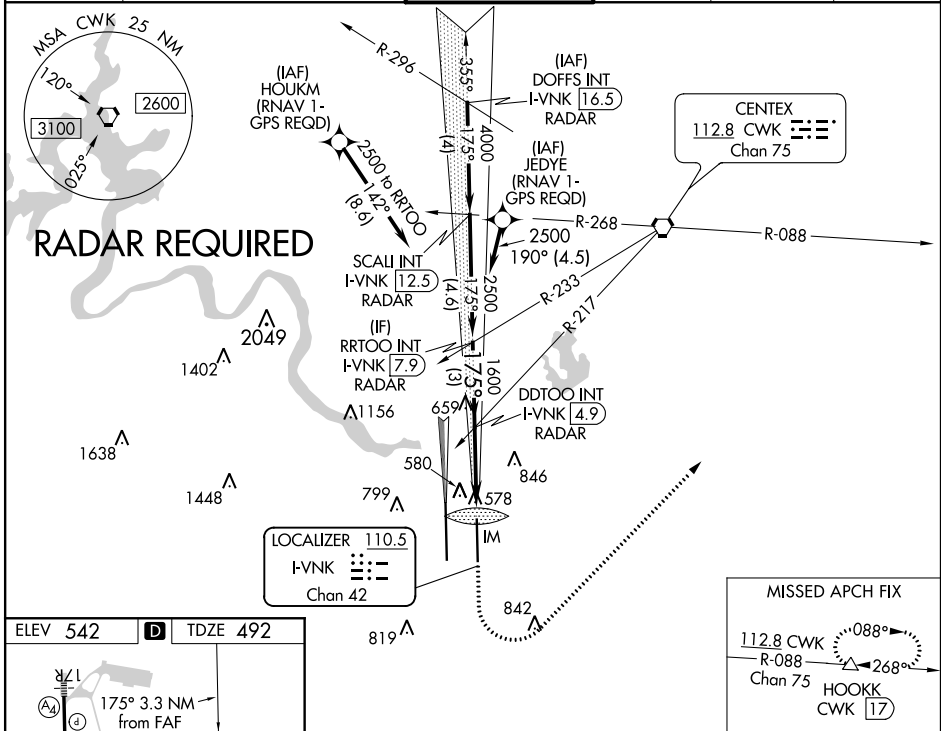


LOC/DME I-VNK 110.5 Chan 42	APP CRS 175°	Rwy Idg 9000 TDZE 492 Apt Elev 542
--	------------------------	---

ILS or LOC RWY 17L

AUSTIN-BERGSTROM INTL (AUS)

<p>⚠ Simultaneous approach authorized. DME required. For inop ALS, increase S-ILS 17L Cat E visibility to RVR 4000, and S-LOC 17L Cats C, D, E visibility to RVR 5500.</p>	<p>ALSF-2 (A)</p>	<p>MISSED APPROACH: Climb to 1000, then climbing left turn to 3000 on heading 040° and CWK VORTAC R-088 to HOOKK/CWK 17 DME and hold.</p>			
		D-ATIS 124.4	AUSTIN APP CON 127.225 317.65 (EAST) 120.875 270.25 (SOUTH) 119.0 370.85 (WEST)	AUSTIN TOWER 121.0 281.5	GND CON 121.9 348.6



<p>VGSI and ILS glidepath not coincident (VGSI Angle 3.00/TCH 74).</p>		<p>1000 3000 hdg 040°</p>	<p>CWK R-088 HOOKK</p>		
<p>RRTOO INT I-VNK 7.9 RADAR</p>	<p>DDTOO INT I-VNK 4.9 RADAR</p>	<p>*LOC only.</p>			
<p>GS 3.00° TCH 61</p>		<p>2500-175° → 1600 → *I-VNK 2.5 → I-VNK 1.6 → IM</p>			
<p>3 NM</p>		<p>2.4 NM</p>			
<p>0.8 NM</p>		<p>0.1 NM</p>			
CATEGORY	A	B	C	D	E
S-ILS 17L	692/18 200 (200-½)				
S-LOC 17L	840/24	348 (300-½)	840/30 348 (300-¾)		
(C) CIRCLING	1040-1 498 (500-1)	1100-1 558 (600-1)	1200-1¾ 658 (700-1¾)	1200-2 658 (700-2)	1520-3 978 (1000-3)

SC-3, 04 JAN 2018 to 01 FEB 2018

SC-3, 04 JAN 2018 to 01 FEB 2018