

VORTAC SAF 110.6 Chan 43	APP CRS 332°	Rwy Idg TDZE Apt Elev 6316 6304 6348
---------------------------------------	------------------------	--

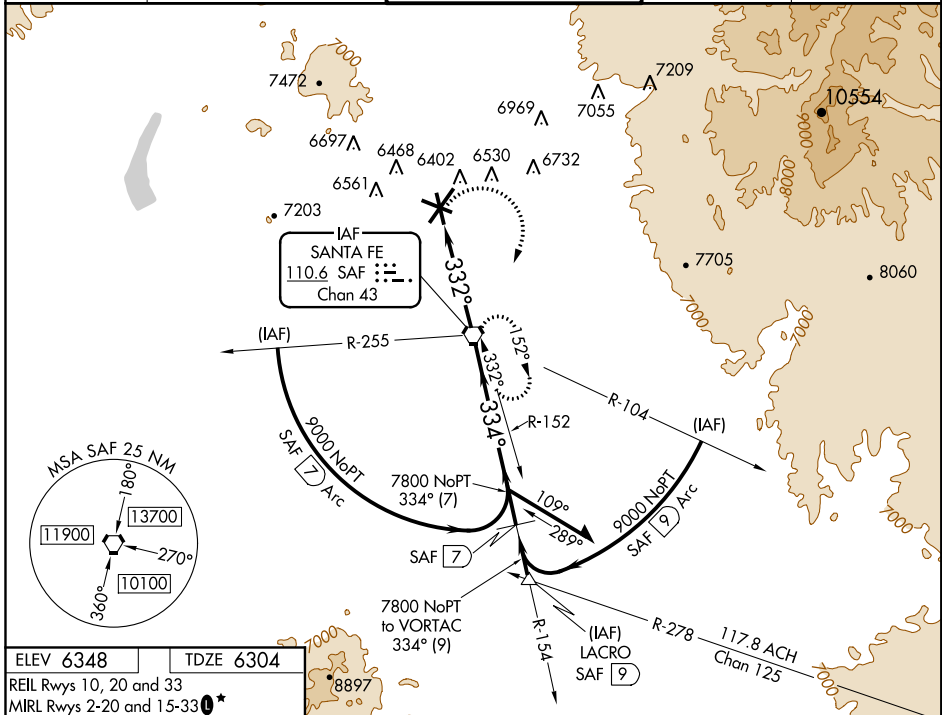
VOR RWY 33

SANTA FE MUNI (SAF)

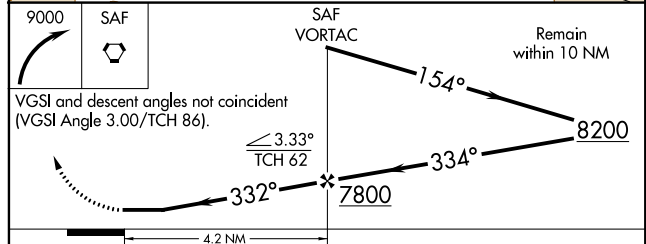
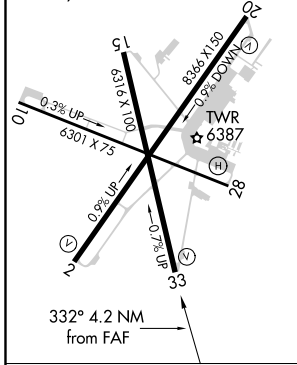
⚠ When Control Tower closed, except for operators with approved weather reporting service, use Albuquerque altimeter setting.

⚠ MISSED APPROACH: Climbing right turn to 9000 direct SAF VORTAC and hold, continue climb-in-hold to 9000.

ATIS 128.55	ALBUQUERQUE CENTER 132.8 346.35	SANTA FE TOWER ★ 119.5 (CTAF) 239.3	GND CON 121.7	UNICOM 122.95
-----------------------	---	---	-------------------------	-------------------------



ELEV 6348	TDZE 6304
REIL Rwy 10, 20 and 33	MIRL Rwy 2-20 and 15-33 ★
MIRL Rwy 10-28	



CATEGORY	A	B	C	D
S-33	6720-1	416 (400-1)	6720-1½	416 (400-1½)
CIRCLING	6840-1 492 (500-1)	6860-1 512 (600-1)	6860-1½ 512 (600-1½)	7020-2½ 672 (700-2½)
ALBUQUERQUE ALTIMETER SETTING MINIMUMS				
S-33	7620-1½ 1316 (1300-1½)	7620-1½ 1316 (1300-1½)	7620-3	1316 (1300-3)
CIRCLING	NA			

FAF to MAP 4.2 NM					
Knots	60	90	120	150	180
Min:Sec	4:12	2:48	2:06	1:41	1:24

SW-1, 04 JAN 2018 to 01 FEB 2018

SW-1, 04 JAN 2018 to 01 FEB 2018