

# POAKE TWO DEPARTURE

SL-548 (FAA)

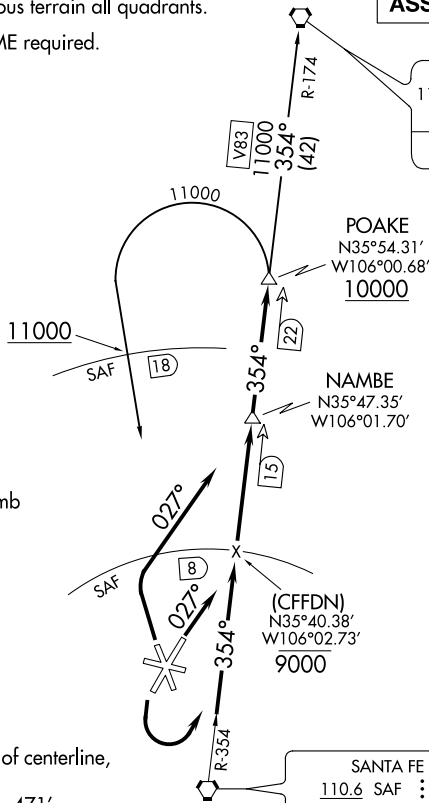
SANTA FE MUNI (SAF)  
SANTA FE, NEW MEXICO

ATIS 128.55  
GND CON  
121.7  
SANTA FE TOWER\*  
119.5 (CTAF) 239.3  
ALBUQUERQUE CENTER  
132.8 346.35

**CAUTION:**  
Mountainous terrain all quadrants.  
**NOTE:** DME required.

**TOP ALTITUDE:  
ASSIGNED by ATC**

TAOS  
117.6 TAS  
Chan 123  
N36°36.53'  
W105°54.38'  
L-8



**TAKEOFF MINIMUMS:**  
Rwy 2: Standard with minimum climb  
of 220' per NM to 7300.  
Rwy 20, 30: Standard.

**TAKEOFF OBSTACLE NOTES:**  
Rwy 20: Tree 85' from DER, 354' left of centerline,  
13' AGL/6276' MSL.  
Rising terrain 231' from DER, 471'  
right of centerline, 6282' MSL.

NOTE: Chart not to scale.

## DEPARTURE ROUTE DESCRIPTION

**TAKEOFF RUNWAY 2:** Climb heading 027° thence. . . .  
**TAKEOFF RUNWAY 20:** Climbing left turn thence. . . .  
**TAKEOFF RUNWAY 33:** Climbing right turn to heading 027° thence. . . .  
. . . Intercept and proceed on SAF R-354 to POAKE DME fix. Cross 8 DME ARC  
north of SAF VORTAC at or below 9000. Cross POAKE DME fix at or  
above 10000. Then on (transition) or (assigned route).

**SANTA FE TRANSITION (POAKE2.SAF):** From POAKE DME fix left turn direct  
SAF VORTAC. Cross 18 DME north of SAF VORTAC at/above 11000'.

**TAOS TRANSITION (POAKE2.TAS):** From POAKE DME fix via SAF R-354 and  
TAS R-174 to TAS VORTAC.

# POAKE TWO DEPARTURE

SW-1, 04 JAN 2018 to 01 FEB 2018

SW-1, 04 JAN 2018 to 01 FEB 2018