

WAAS CH 61311 W04A	APP CRS 043°	Rwy ldg TDZE Apt Elev	4974 24 24
--	------------------------	-----------------------------	---------------------------------------

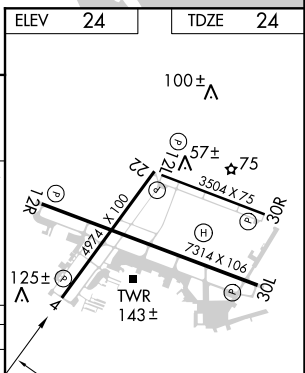
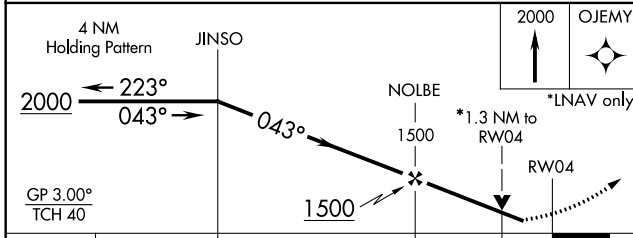
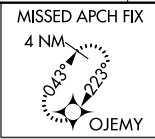
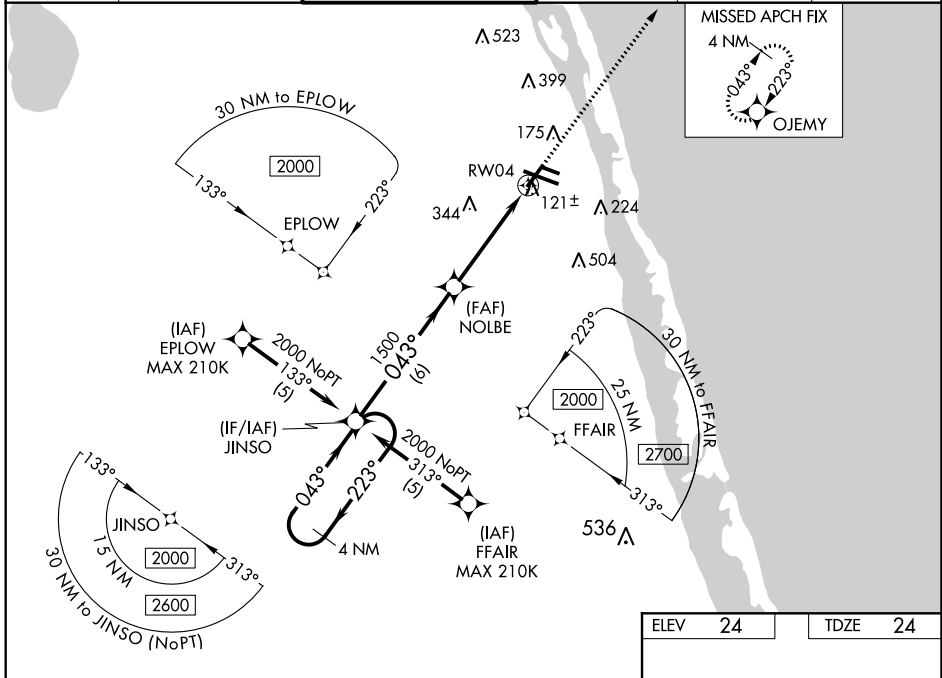
RNAV (GPS) RWY 4

VERO BEACH MUNI (VRB)

⚠ Circling to Rwy 30R at night. For uncompensated Baro-VNAV systems, LNAV/VNAV NA below 0°C (32°F) or above 54°C (130°F). DME/DME RNP-0.3 NA. When local altimeter setting not received, use Fort Pierce altimeter setting and increase all DA 23 feet and MDA 40 feet, increase LNAV/VNAV all Cnts visibility 1/8 mile, LNAV Cat C/D visibility 1/4 mile and Circling Cat D visibility 1/4 mile. Baro-VNAV and VDP NA when using Fort Pierce altimeter setting. Helicopter visibility reduction below 3/4 SM NA.

MISSED APPROACH:
Climb to 2000 direct OJEMY and hold.

ATIS 120.575	PALM BEACH APP CON 123.625 225.4	VERO BEACH TOWER * 126.3 (CTAF) 0	GND CON 127.45	CLNC DEL 134.975	UNICOM 122.95
------------------------	--	---	--------------------------	----------------------------	-------------------------



CATEGORY	A	B	C	D
LPV DA	297-7/8		273 (300-7/8)	
LNAV/VNAV DA	355-1 1/8		331 (400-1 1/8)	
LNAV MDA	480-1	456 (500-1)	480-1 3/8	456 (500-1 1/8)
CIRCLING	560-1	536 (600-1)	560-1 1/2	660-2 636 (700-2)

MIRL Rwy 4-22, 12R-30L, and 12L-30R
REIL Rwy 4, 12R, 22 and 30L

SE-3: 04 JAN 2018 to 01 FEB 2018

SE-3: 04 JAN 2018 to 01 FEB 2018