

WAAS CH 53611 W22A	APP CRS 223°	Rwy Idg TDZE 23 Apt Elev 24	4974
--	------------------------	---	-------------

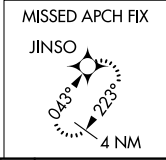
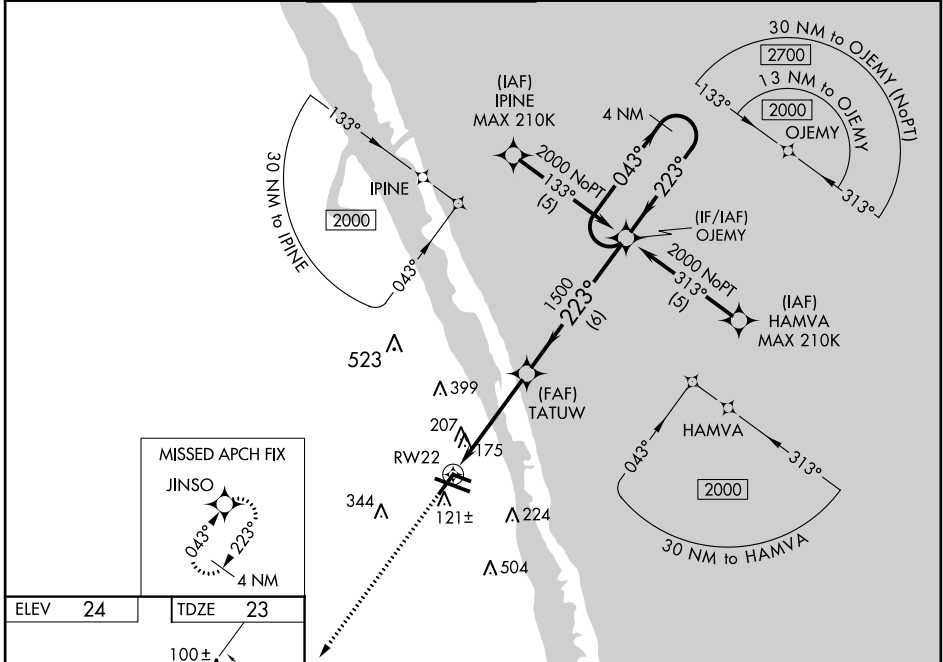
RNAV (GPS) RWY 22

VERO BEACH MUNI (VRB)

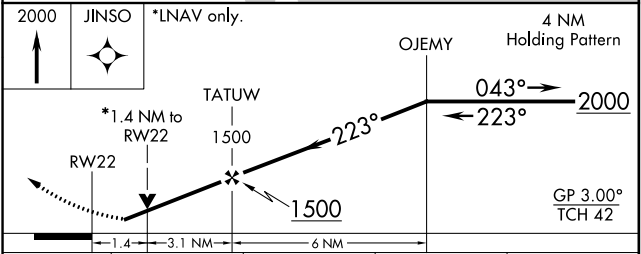
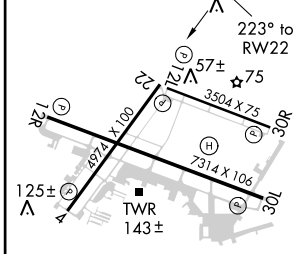
⚠ Circling to Rwy 30R NA at night. For uncompensated Baro-VNAV systems, LNAV/VNAV NA below 0°C (32°F) or above 43°C (109°F). DME/DME-0.3 NA. When local altimeter setting not received, use Fort Pierce altimeter setting and increase all DA 23 feet and all MDA 40 feet and increase LPV and LNAV/VNAV all Cnts visibility ½ mile and LNAV Cnts C/D ½ mile and Circling Cat D visibility ¼ mile. Baro-VNAV and VDP NA when using Fort Pierce altimeter setting. Helicopter visibility reduction below ¼ SM NA.

MISSED APPROACH:
Climb to 2000 direct JINSO and hold.

ATIS 120.575	PALM BEACH APP CON 123.625 225.4	VERO BEACH TOWER * 126.3 (CTAF) 0	GND CON 127.45	CLNC DEL 134.975	UNICOM 122.95
------------------------	--	---	--------------------------	----------------------------	-------------------------



ELEV 24	TDZE 23
----------------	----------------



CATEGORY	A	B	C	D
LPV DA		340-1	317 (400-1)	
LNAV/VNAV DA		544-1¾	521 (600-1¾)	
LNAV MDA	520-1	497 (500-1)	520-1¾	497 (500-1¾)
CIRCLING	560-1	536 (600-1)	560-1½	660-2 536 (600-1½) 636 (700-2)

MIRL Rwy 4-22, 12R-30L, and 12L-30R
REIL Rwy 4, 12R, 22 and 30L

SE-3, 04 JAN 2018 to 01 FEB 2018

SE-3, 04 JAN 2018 to 01 FEB 2018