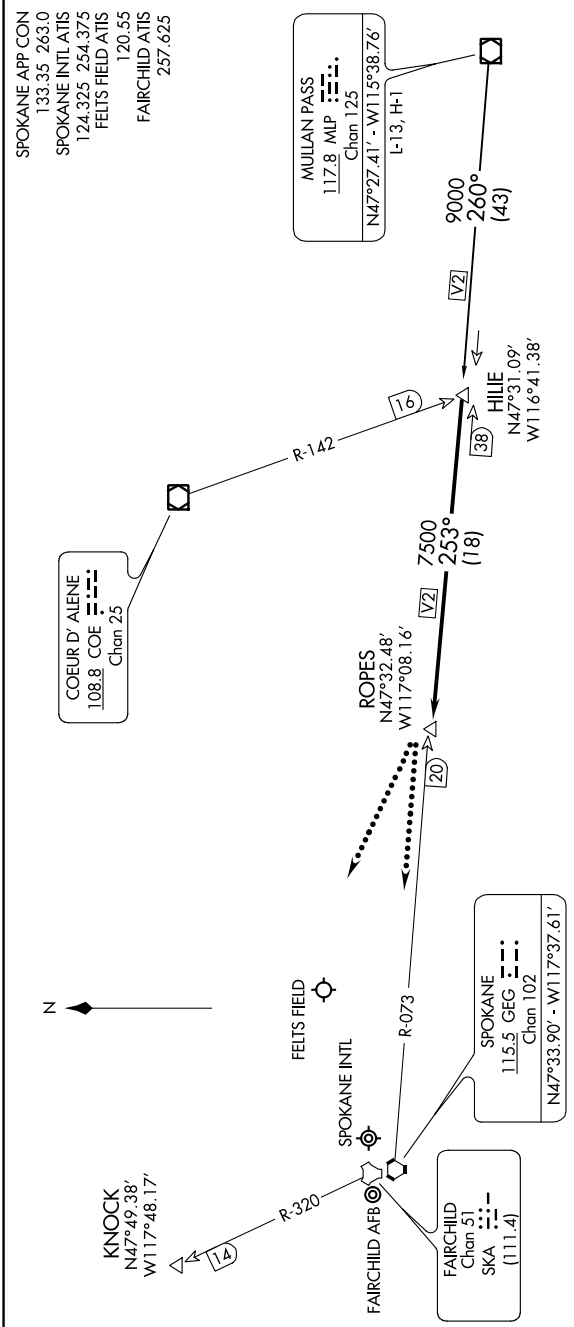


HILIE TWO ARRIVAL (HILIE.HILIE2)

ST-403 (FAA)

SPOKANE, WASHINGTON

NW-1, 04 JAN 2018 to 01 FEB 2018



ARRIVAL ROUTE DESCRIPTION

MULLAN PASS TRANSITION (MLP.HILIE2): From over MLP VOR/DME via MLP R-260 to HILIE INT. Thence . . .

. . . From over HILIE INT via GEG R-073 to ROPES. Expect radar vectors to final approach course.

LOST COMMUNICATIONS: After ROPES:
Landing Spokane Intl or Felts Field: Proceed to GEG VORTAC via GEG R-073, maintain last assigned altitude to GEG.
Landing Fairchild AFB: Proceed to KNOCK via direct, maintain last assigned altitude to KNOCK.

NOTE: DME and RADAR required.
NOTE: Chart not to scale.

HILIE TWO ARRIVAL (HILIE.HILIE2)

SPOKANE, WASHINGTON