

LOC/DME I-FLZ 111.7 Chan 54	APP CRS 221°	Rwy Ldg TDZE Apt Elev	4499 1957 1957
---	------------------------	-----------------------------	---

ILS or LOC RWY 22R

FELTS FIELD (SFF)

▼ Inop table does not apply to S-ILS all Cats. Circling NA northwest of Rwy 4L-22R. DME required. Helicopter visibility reduction below 3/4 SM NA.
▲ When local altimeter setting not received, use Spokane Intl altimeter setting and increase all DA 82 feet and all MDA 100 feet; and increase S-LOC Cat C visibility 1/8 and Circling Cat C visibility 1/4.
 For inop MALSR, increase S-LOC Cat A visibility to 1 and Cat C visibility to 2 1/2.

MALSR



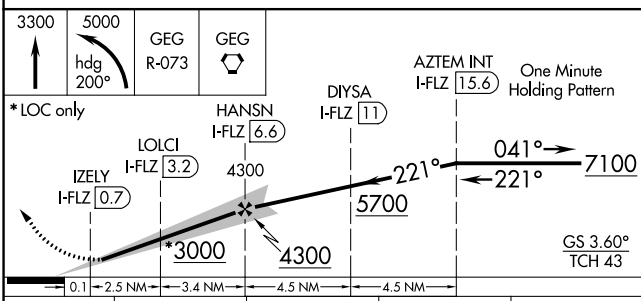
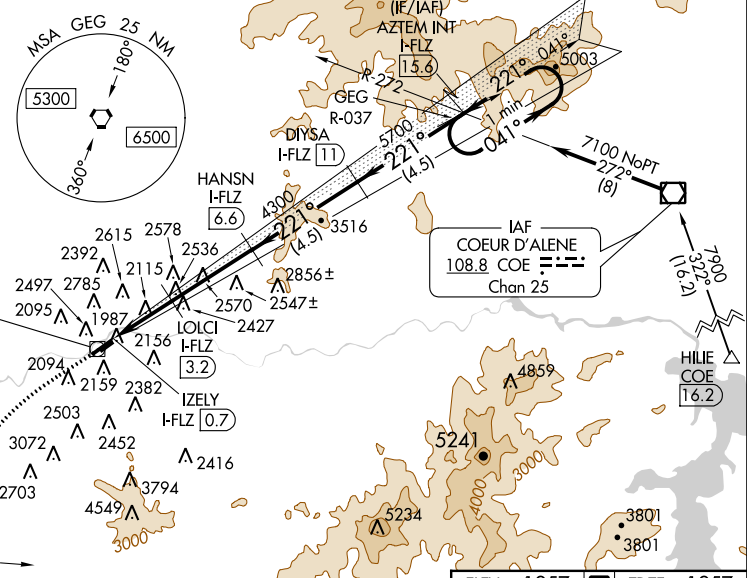
MISSED APPROACH: Climb to 3300 then climbing left turn to 5000 on heading 200° and on GEG VORTAC R-073 to GEG VORTAC and hold.

ATIS 120.55	SPOKANE APP CON 133.35 263.0	FELTS TOWER ★ 132.5 (CTAF) 239.025	GND CON 121.7	CLNC DEL 121.7	UNICOM 122.95
-----------------------	--	---	-------------------------	--------------------------	-------------------------

MISSED APCH FIX
SPOKANE
115.5 GEG
Chan 102

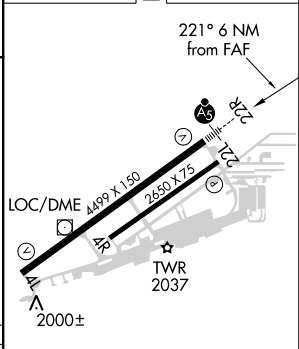
LOCALIZER 111.7
I-FLZ
Chan 54
LOC offset 2.98°

SPOKANE 115.5 GEG
Chan 102



CATEGORY	A	B	C	D
S-ILS 22R	2227-3/4	270 (300-3/4)	2227-1 7/8 270 (300-1 7/8)	NA
S-LOC 22R	2800-3/4	843 (900-3/4)	2800-1 7/8 843 (900-1 7/8)	NA
C CIRCLING	2800-1 1/4 843 (900-1 1/4)	2800-1 1/2 843 (900-1 1/2)	3020-3 1063 (1100-3)	NA

ELEV 1957	D TDZE 1957
-----------	--------------------



REIL Rwy 4L
MIRL Rwy 4L-22R

NW-1, 04 JAN 2018 to 01 FEB 2018

NW-1, 04 JAN 2018 to 01 FEB 2018