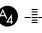



LOC/DME I-SEM <b>110.5</b> Chan 42	APP CRS <b>329°</b>	Rwy Idg <b>8014</b>	<b>165</b>
		TDZE <b>165</b>	
		Apt Elev <b>166</b>	

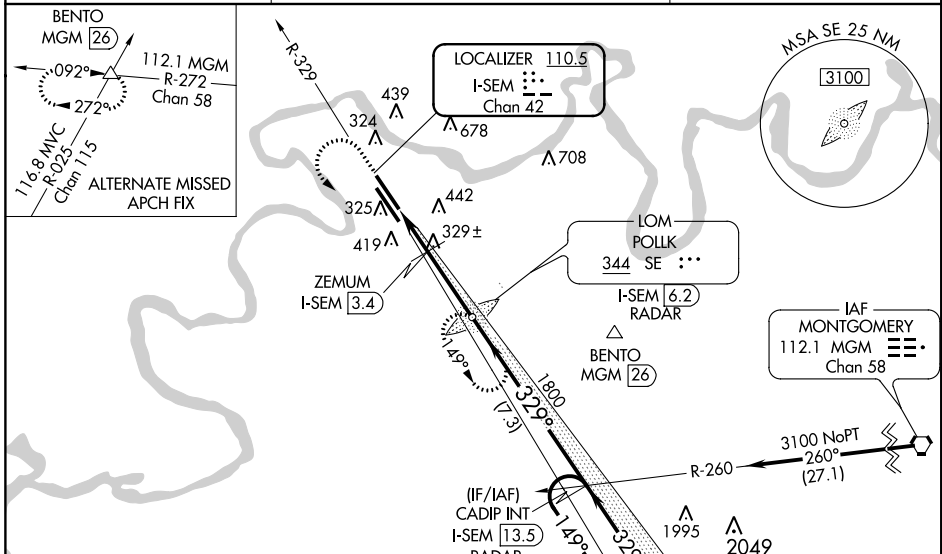
# ILS Z or LOC Z RWY 33

CRAIG FIELD (SEM)

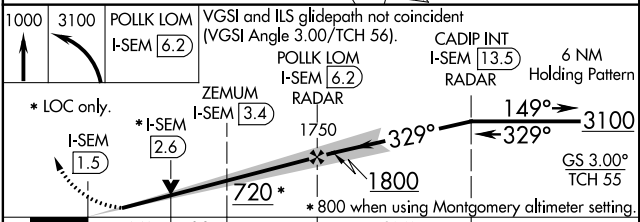
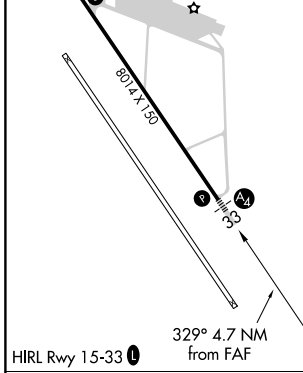
**⚠** For inoperative MALS, increase S-LOC 33 Cat D visibility to 1 $\frac{1}{2}$  mile and increase ZEMUM fix minimums S-LOC 33 Cats C and D visibility to 1 $\frac{1}{2}$  mile. VDP NA with Montgomery altimeter setting. When local altimeter setting not received, use Montgomery altimeter setting and increase DA 78 feet, all MDA 80 feet, increase S-LOC 33 Cats C and D visibility  $\frac{1}{8}$  mile, Circling Cat C visibility  $\frac{1}{2}$  mile and Circling Cat D visibility  $\frac{1}{4}$  mile, increase ZEMUM fix minimums S-LOC 33 Cats C and D visibility  $\frac{1}{8}$  mile and Circling Cat C visibility  $\frac{1}{2}$  mile and Circling Cat D visibility  $\frac{1}{4}$  mile. For inoperative MALS, when using Montgomery altimeter setting, increase S-ILS 33 all Cats visibility to  $\frac{1}{2}$  mile, S-LOC 33 Cats C and D visibility to 1 $\frac{1}{4}$  mile and increase ZEMUM fix minimums Cats C and D visibility to 1 $\frac{1}{2}$  mile. ADF required.

**MALS**  
  
**MISSED APPROACH:** Climb to 1000 then climbing left turn to 3100 direct POLLK LOM/I-SEM 6.2 DME/RADAR and hold, continue climb-in-hold to 3100.

AWOS-3 <b>119.15</b>	MONTGOMERY APP CON * <b>124.0 363.025</b>	UNICOM <b>122.7</b> (CTAF) 
-------------------------	--	---



ELEV 166	TDZE 165
----------	----------



CATEGORY	A	B	C	D
S-ILS 33	365- $\frac{3}{4}$		200 (200- $\frac{3}{4}$ )	
S-LOC 33	720- $\frac{3}{4}$	555 (600- $\frac{3}{4}$ )	720-1 $\frac{3}{8}$	555 (600-1 $\frac{3}{8}$ )
<b>C</b> CIRCLING	720-1	760-1	760-1 $\frac{1}{2}$	1040-2 $\frac{3}{4}$
	554 (600-1)	594 (600-1)	594 (600-1 $\frac{1}{2}$ )	874 (900-2 $\frac{3}{4}$ )
ZEMUM FIX MINIMUMS				
S-LOC 33	580- $\frac{3}{4}$	415 (500- $\frac{3}{4}$ )	580-1	415 (500-1)
<b>C</b> CIRCLING	660-1	760-1	760-1 $\frac{1}{2}$	1040-2 $\frac{3}{4}$
	494 (500-1)	594 (600-1)	594 (600-1 $\frac{1}{2}$ )	874 (900-2 $\frac{3}{4}$ )

FAF to MAP 4.7 NM					
Knots	60	90	120	150	180
Min:Sec	4:42	3:08	2:21	1:53	1:34

SE-4, 04 JAN 2018 to 01 FEB 2018

SE-4, 04 JAN 2018 to 01 FEB 2018