

APP CRS	Rwy Idg	<b>5701</b>
<b>016°</b>	TDZE	<b>56</b>
	Apt Elev	<b>56</b>

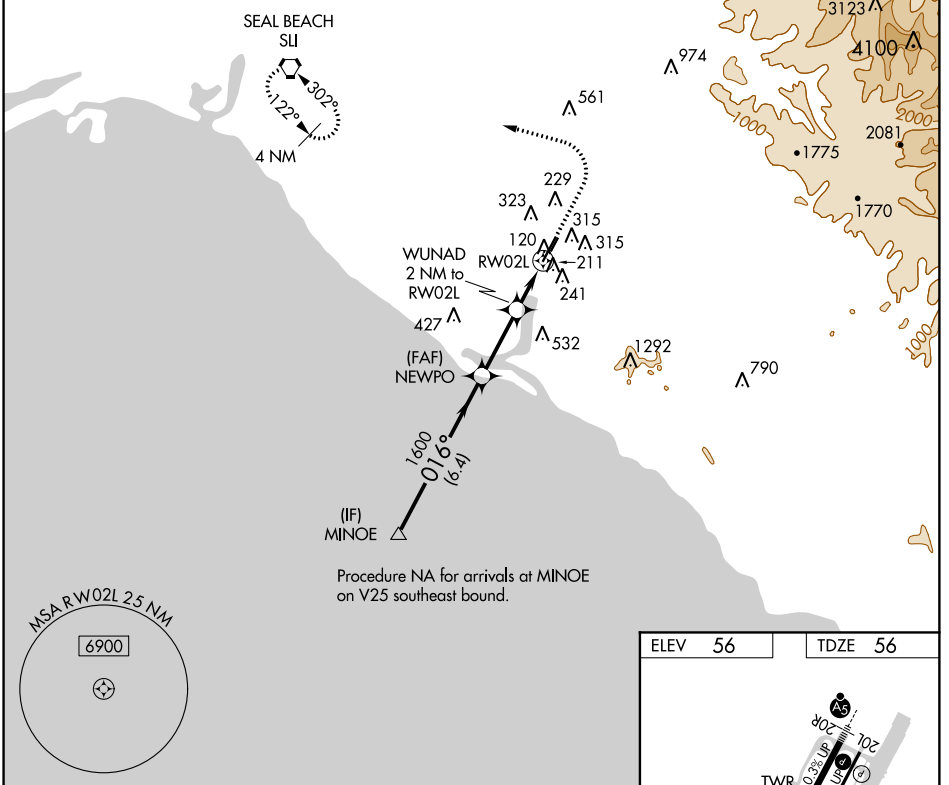
# RNAV (GPS) Y RWY 2L

JOHN WAYNE AIRPORT-ORANGE COUNTY (SNA)

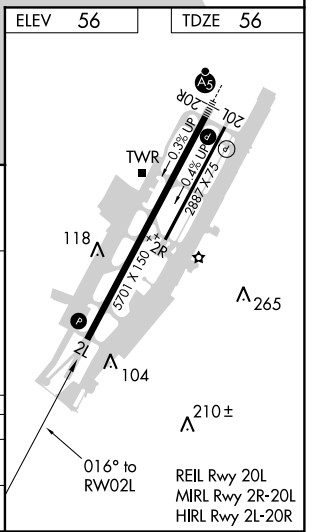
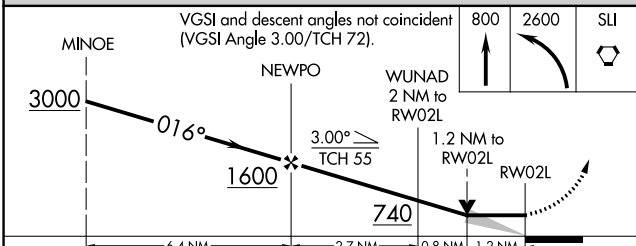
**▽** DME/DME RNP-0.3 NA. VDP NA when using Fullerton altimeter setting. When local altimeter setting not received, use Fullerton altimeter setting and increase all MDA 40 feet, increase Circling Cat C visibility ¼ SM.

**▲** MISSED APPROACH: Climb to 800 then climbing left turn to 2600 direct SLI VORTAC and hold.

D-ATIS <b>126.0</b>	SOCAL APP CON <b>121.3 263.1</b>	<b>JOHN WAYNE TOWER ★</b> <b>126.8 (CTAF) 0 379.9</b>	GND CON (EAST) <b>120.8</b> (WEST) <b>132.25</b>	CLNC DEL <b>118.0</b>	CPDLC	UNICOM <b>122.95</b>
------------------------	-------------------------------------	--	---	--------------------------	-------	-------------------------



Procedure NA for arrivals at MINOE on V25 southeast bound.



CATEGORY	A	B	C	D
LNVA MDA	520-1 464 (500-1)		520-1 3/8 464 (500-1 3/8)	
<b>C</b> CIRCLING	640-1 584 (600-1)		840-2 1/4 784 (800-2 1/4)	1160-3 1104 (1200-3)

SW-3, 04 JAN 2018 to 01 FEB 2018

SW-3, 04 JAN 2018 to 01 FEB 2018