

APP CRS <b>016°</b>	Rwy Idg <b>5701</b>
	TDZE <b>56</b>
	Apt Elev <b>56</b>

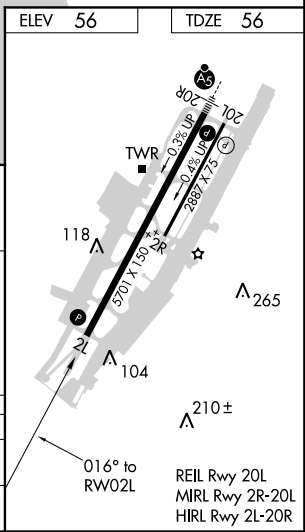
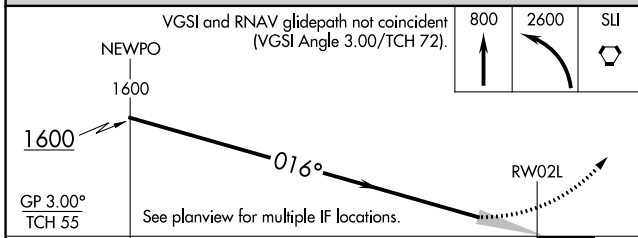
# RNAV (RNP) Z RWY 2L

JOHN WAYNE AIRPORT-ORANGE COUNTY (SNA)

For uncompensated Baro-VNAV systems, procedure NA below 5°C (41°F) or above 54°C (130°F). GPS required.

MISSED APPROACH: Climb to 800 then climbing left turn to 2600 direct SLI VORTAC and hold.

D-ATIS <b>126.0</b>	SOCAL APP CON <b>121.3 263.1</b>	JOHN WAYNE TOWER ★ <b>126.8 (CTAF) 379.9</b>	GND CON (EAST) <b>120.8</b> (WEST) <b>132.25</b>	CLNC DEL <b>118.0</b>	CPDLC	UNICOM <b>122.95</b>
------------------------	-------------------------------------	---	---	--------------------------	-------	-------------------------



CATEGORY	A	B	C	D
RNP 0.30 DA	403-1 $\frac{1}{8}$		347 (400-1 $\frac{1}{8}$ )	

## AUTHORIZATION REQUIRED

SW-3, 04 JAN 2018 to 01 FEB 2018

SW-3, 04 JAN 2018 to 01 FEB 2018