


RNAV (RNP) Z RWY 20R

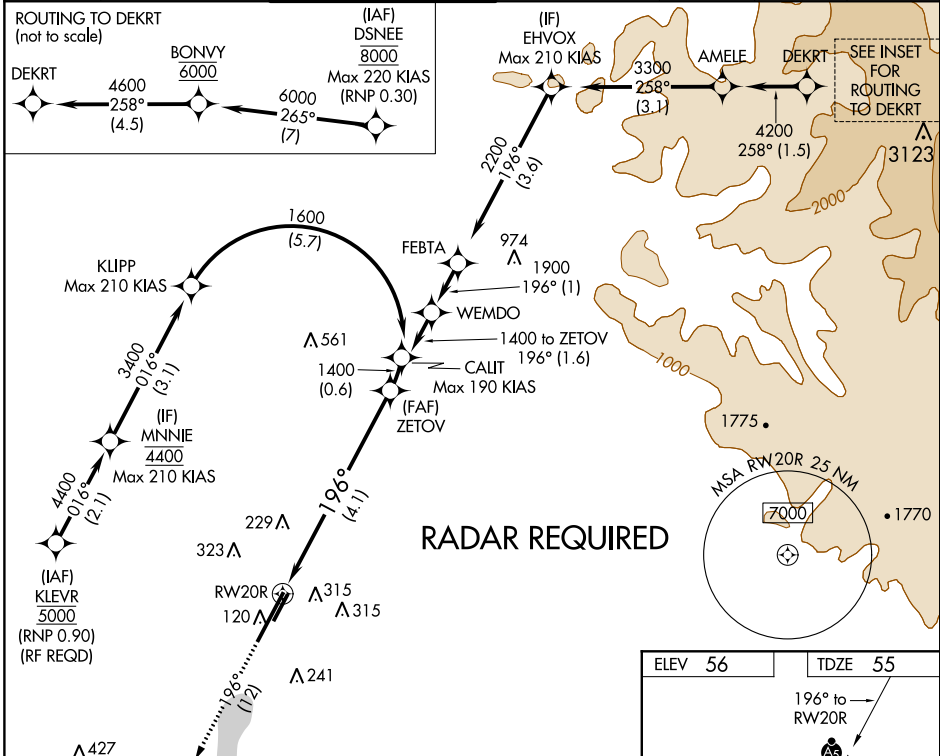
JOHN WAYNE AIRPORT-ORANGE COUNTY (SNA)

APP CRS	Rwy Idg	5701
196°	TDZE	55
	Apt Elev	56

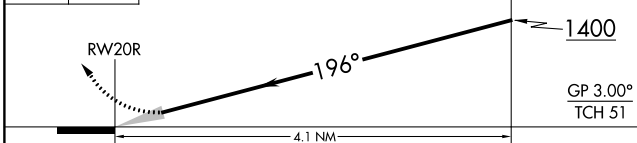
▽ For uncompensated Baro-VNAV systems, procedure NA below 5°C (41°F) or above 54°C (130°F). GPS required.

MALSR

MISSED APPROACH: Climb to 3000 on track 196° to MINOE.

D-ATIS 126.0	SOCAL APP CON 121.3 263.1	JOHN WAYNE TOWER * 126.8 (CTAF) 0 379.9	GND CON (EAST) 120.8 (WEST) 132.25	CLNC DEL 118.0	CPDLC	UNICOM 122.95
------------------------	-------------------------------------	--	---	--------------------------	-------	-------------------------

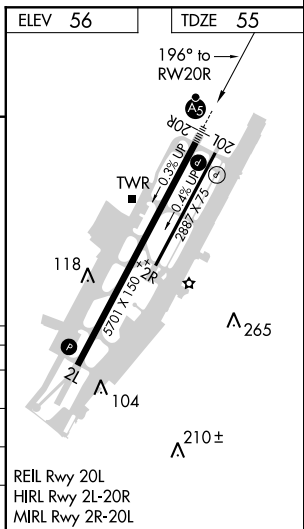


3000 ↑ tr 196° MINOE △
 VGSI and RNAV glidepath not coincident (VGSI Angle 3.00°/TCH 63).
 See planview for multiple IF locations.



CATEGORY	A	B	C	D
RNP 0.11 DA		377/30	322 (400- $\frac{5}{8}$)	
RNP 0.15 DA		563-1 $\frac{1}{4}$	508 (600-1 $\frac{1}{4}$)	
RNP 0.30 DA		619-1 $\frac{1}{2}$	564 (600-1 $\frac{1}{2}$)	

AUTHORIZATION REQUIRED



SW-3, 04 JAN 2018 to 01 FEB 2018

SW-3, 04 JAN 2018 to 01 FEB 2018