

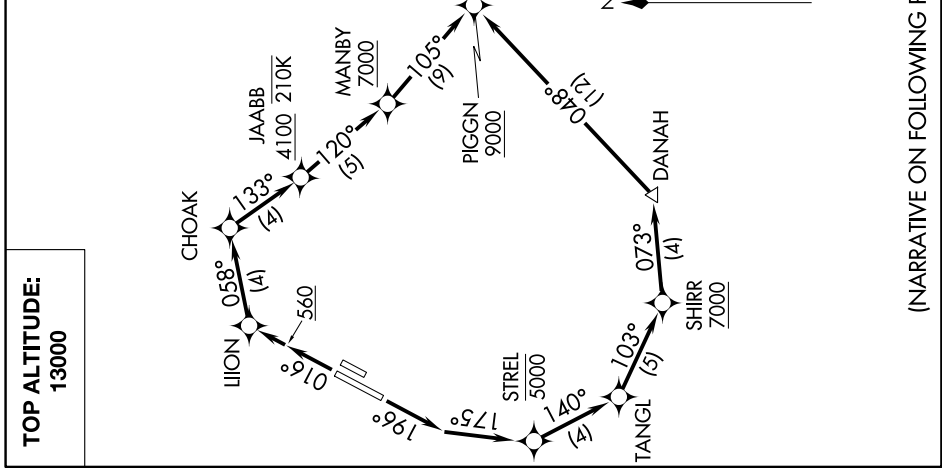
PIGGN TWO DEPARTURE (RNAV)

D-ATIS 126.0
 CINCDL 118.0
 CPDLC
 GND CON
 120.8 (EAST)
 132.25 (WEST)
 JOHN WAYNE TOWER*
 126.8 379.9
 SOCAL DEP CON
 128.1 281.4

TTRUE
 WURMO
 LVELL
 AVRRY
 CNERY

NOTE: RADAR required.
 NOTE: RNAV-1.
 NOTE: DME/DME/IRU or GPS required.
 NOTE: Turbojet and turboprop only.
 NOTE: Parachute jumping all hours, 14000' and below, north of route between PIGGN and FNCHH.
 NOTE: Aircraft may be RADAR vectored to DANAH or PIGGN.

TAKEOFF MINIMUMS
 Rwy 2L: Standard with a minimum climb of 500 feet per NM to 800.
 Rwy 20R: Standard.



(NARRATIVE ON FOLLOWING PAGE)

NOTE: Chart not to scale.

SW-3, 04 JAN 2018 to 01 FEB 2018

SW-3, 04 JAN 2018 to 01 FEB 2018