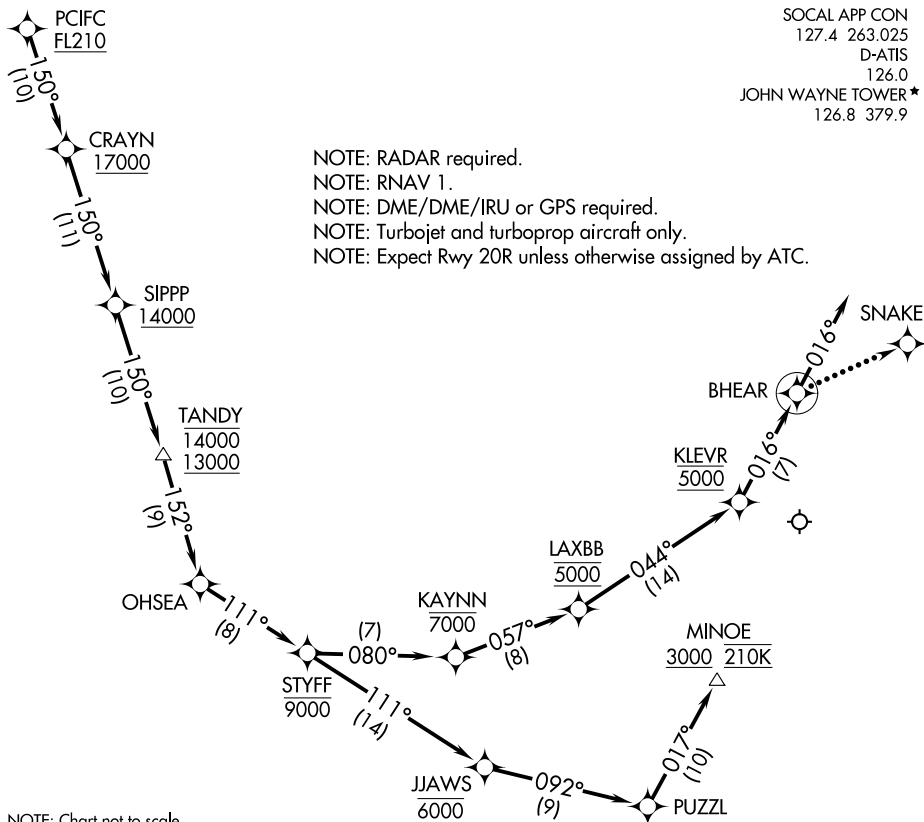


OHSEA ONE ARRIVAL (RNAV) Arrival Routes



SOCAL APP CON
127.4 263.025
D-ATIS
126.0
JOHN WAYNE TOWER*
126.8 379.9

NOTE: RADAR required.
NOTE: RNAV 1.
NOTE: DME/DME/IRU or GPS required.
NOTE: Turbojet and turboprop aircraft only.
NOTE: Expect Rwy 20R unless otherwise assigned by ATC.

SW-3, 04 JAN 2018 to 01 FEB 2018

SW-3, 04 JAN 2018 to 01 FEB 2018

ARRIVAL ROUTE DESCRIPTION

From PCIFC on track 150° to cross CRAYN at or above 17000, then on track 150° to cross SIPPP at or above 14000, then on track 150° to cross TANDY between 13000 and 14000, then on track 152° to OHSEA.

LANDING RUNWAY 2L: From OHSEA on track 111° to cross STYFF at or below 9000, then on track 111° to cross JJAWS at or below 6000, then on track 092° to PUZZL, then on track 017° to cross MINOE at or above 3000 and at 210K. Expect RNAV (RNP) Z RWY 2L or vectors to final approach course.

LANDING RUNWAY 20R: From OHSEA on track 111° to cross STYFF at or below 9000, then on track 080° to cross KAYNN at or below 7000, then on track 057° to cross LAXBB at 5000, then on track 044° to cross KLEVR at 5000, then on track 016° to BHEAR, then on track 016°. Expect RNAV (RNP) Z RWY 20R or vectors to final approach course.

LOST COMMUNICATIONS

LANDING RUNWAY 20R: After BHEAR turn right direct SNAKE and execute the ILS or LOC RWY 20R approach.

OHSEA ONE ARRIVAL (RNAV) Arrival Routes