

# MUSEL EIGHT DEPARTURE

D-ATIS  
126.0  
CLNC DEL  
118.0  
CPDLC  
GND CON  
(EAST) 120.8  
(WEST) 132.25  
SOCAL DEP CON  
128.1 281.4

POMONA  
110.4 POM  
Chan 41  
N34°04.70'-W117°47.22'

SEAL BEACH  
115.7 SLI  
Chan 104  
N33°47.00'  
W118°03.29'  
L-3-4, H-4

LOCALIZER 111.75  
I-SNA  
Chan 54 (Y)

SANTA CATALINA  
111.4 SXC  
Chan 51

OCEANSIDE  
115.3 OCN  
Chan 100  
N33°14.44'-W117°25.06'  
L-4, H-4

JULIAN  
114.0 JLI  
Chan 87

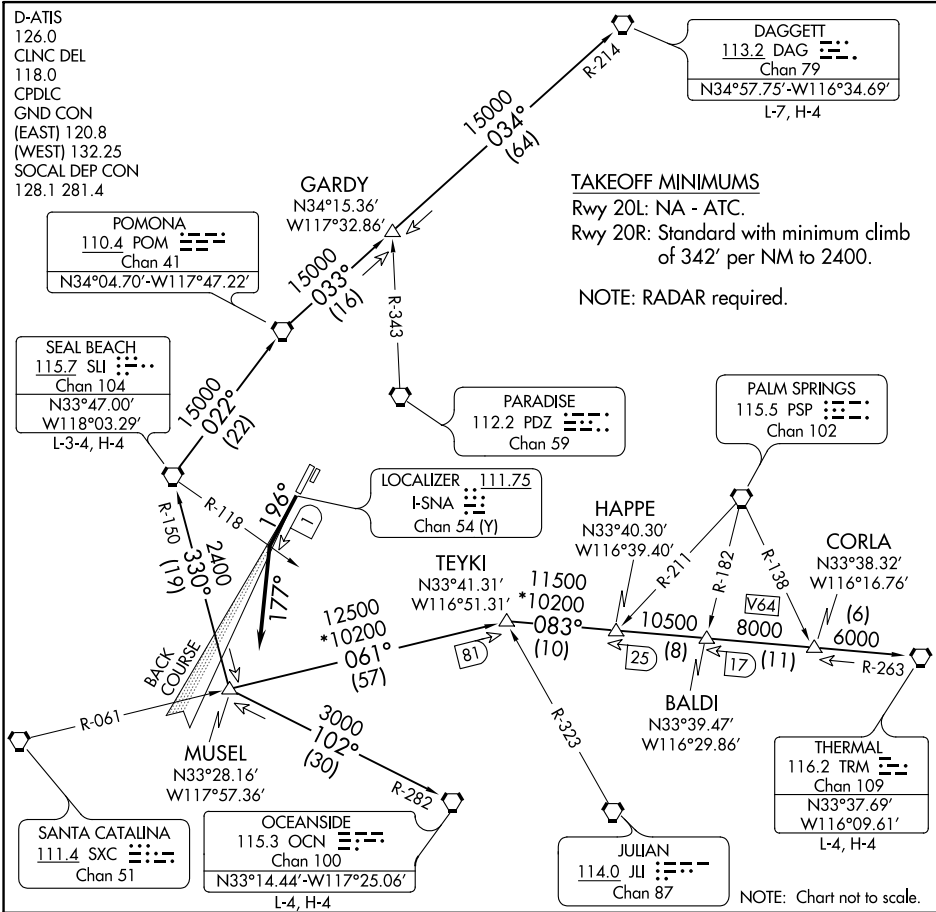
THERMAL  
116.2 TRM  
Chan 109  
N33°37.69'  
W116°09.61'  
L-4, H-4

DAGGETT  
113.2 DAG  
Chan 79  
N34°57.75'-W116°34.69'  
L-7, H-4

### TAKEOFF MINIMUMS

Rwy 20L: NA - ATC.  
Rwy 20R: Standard with minimum climb  
of 342' per NM to 2400.

NOTE: RADAR required.



SW-3, 04 JAN 2018 to 01 FEB 2018

SW-3, 04 JAN 2018 to 01 FEB 2018

### DEPARTURE ROUTE DESCRIPTION

**TAKEOFF RUNWAY 20R:** Climb heading 196° or I-SNA localizer south course to I-SNA 1 DME fix or SLI R-118, turn left heading 177° for vectors to MUSEL INT. Thence . . . .  
 . . . . on (transition) or (assigned route). Expect filed altitude ten minutes after departure.

**DAGGETT TRANSITION (MUSEL8.DAG):** From over MUSEL INT on SLI R-150 to SLI VORTAC, then on SLI R-022 to POM VORTAC, then on POM R-033 to GARDY INT and on DAG R-214 to DAG VORTAC.

**OCEANSIDE TRANSITION (MUSEL8.OCN):** From over MUSEL INT on OCN R-282 to OCN VORTAC.

**SEAL BEACH TRANSITION (MUSEL8.SLI):** From over MUSEL INT on SLI R-150 to SLI VORTAC.

**THERMAL TRANSITION (MUSEL8.TRM):** From over MUSEL INT on SXC R-061 to TEYKI INT and TRM R-263 to TRM VORTAC.