

KEFFR FOUR ARRIVAL (RNAV)

AL-377 (FAA)

SANTA ANA, CALIFORNIA

SW-3, 04 JAN 2018 to 01 FEB 2018

SOCAL APP CON (SNA)
121.3 263.1
SOCAL APP CON (LGB)
124.65 316.125
JOHN WAYNE AIRPORT-ORANGE COUNTY D-ATIS
126.0
LONG BEACH/DAUGHERTY FIELD ATIS
127.75

ARRIVAL ROUTE DESCRIPTION

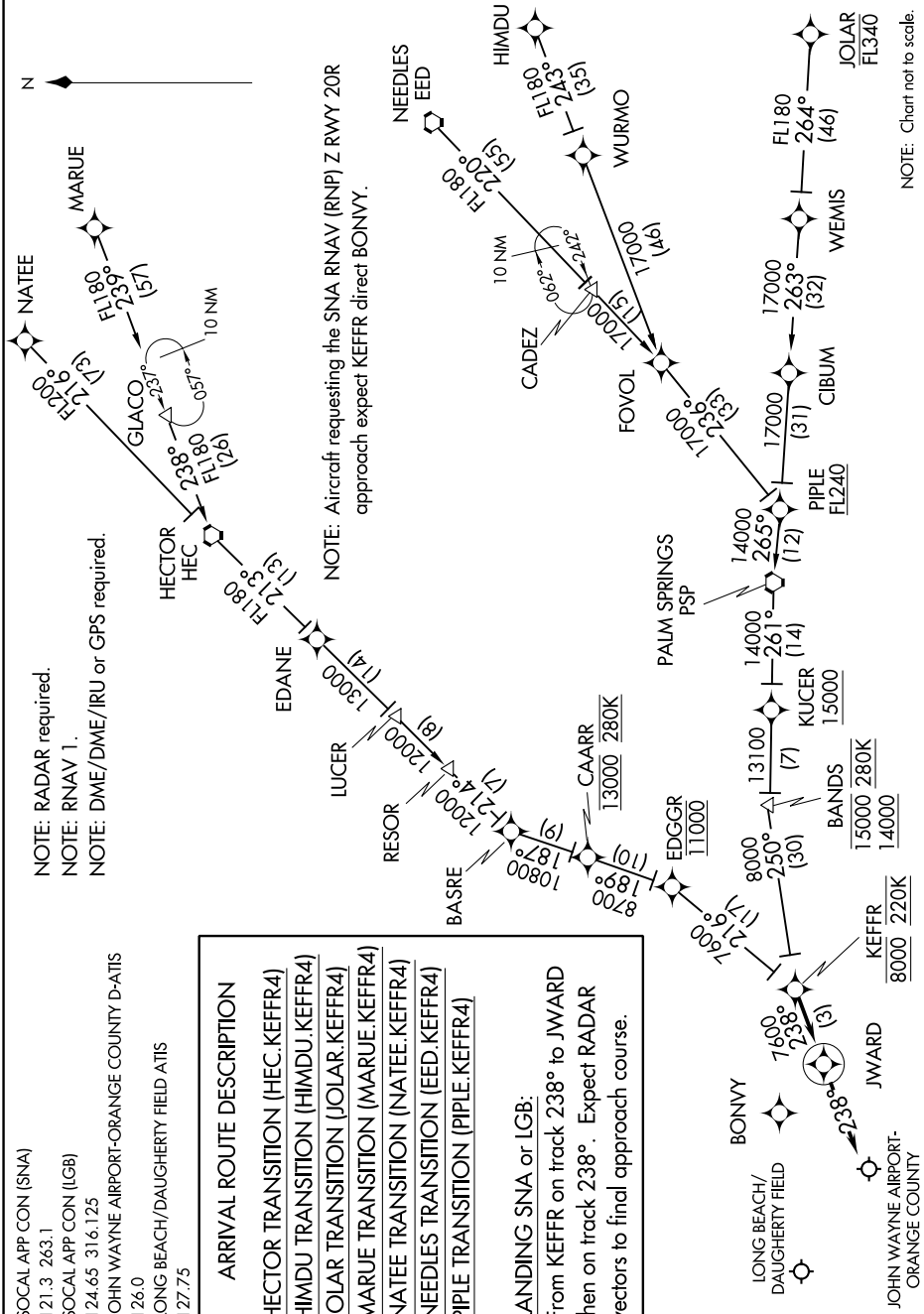
- HECTOR TRANSITION (HEC.KEFFR4)
- HIMDU TRANSITION (HIMDU.KEFFR4)
- JOLAR TRANSITION (JOLAR.KEFFR4)
- MARUE TRANSITION (MARUE.KEFFR4)
- NATEE TRANSITION (NATEE.KEFFR4)
- NEEDLES TRANSITION (EED.KEFFR4)
- PIPLE TRANSITION (PIPLE.KEFFR4)

LANDING SNA or LGB:

From KEFFR on track 238° to JWARD then on track 238°. Expect RADAR vectors to find approach course.

NOTE: RADAR required.
NOTE: RNAV 1.
NOTE: DME/DME/IRU or GPS required.

NOTE: Aircraft requesting the SNA RNAV (RNP) Z RWY 20R approach expect KEFFR direct BONNY.



NOTE: Chart not to scale.

SW-3, 04 JAN 2018 to 01 FEB 2018

KEFFR FOUR ARRIVAL (RNAV)

SANTA ANA, CALIFORNIA