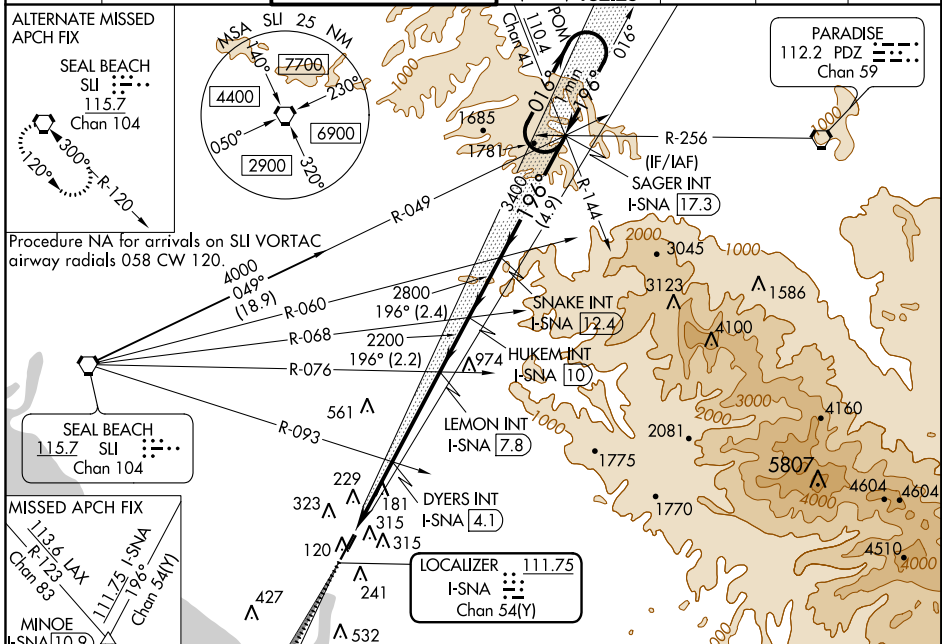


LOC/DME I-SNA 111.75 Chan 54(Y)	APP CRS 196°	Rwy Idg TDZE Apt Elev	5701 55 56
---	------------------------	-----------------------------	---------------------------------------

ILS or LOC RWY 20R

JOHN WAYNE AIRPORT-ORANGE COUNTY (SNA)

*RVR 1800 authorized with the use of FD or AP or HUD to DA.			MALSR 	MISSED APPROACH: Climb to 3000 on I-SNA LOC south course (196°) to MINOE INT/I-SNA 10.9 DME.	
D-ATIS 126.0	SOCAL APP CON 121.3 263.1	JOHN WAYNE TOWER * 126.8 (CTAF) 0 379.9	GND CON (EAST) 120.8 (WEST) 132.25	CLNC DEL 118.0	UNICOM 122.95



ELEV 56	TDZE 55	MINOE	VGSI and ILS glidepath not coincident (VGSI Angle 3.00/TCH 63).	SAGER INT I-SNA 17.3	One Minute Holding Pattern
196° 6.6 NM from FAF		SNAKE INT I-SNA 12.4 HUKEM INT I-SNA 10 LEMON INT I-SNA 7.8 DYERS INT I-SNA 4.1	3000 I-SNA S crs (196°)	196° ← 3500 016° →	GS 3.00° TCH 51
# LOC only I-SNA 1.1 #I-SNA 2.2		1040# 2200	2800 3400	196° ← 3500 016° →	GS 3.00° TCH 51
CATEGORY A		CATEGORY B		CATEGORY C	
S-ILS 20R*		255/24 200 (200-½)		1040/40 1040/55 985 (1000-¾) 985 (1000-1¼) 1040-2½ 985 (1000-2½)	
S-LOC 20R		1040-1¼ 1040-1½ 1040-3 1160-3 984 (1000-1¼) 984 (1000-1½) 984 (1000-3) 1104 (1200-3)		1040-1¼ 1040-1½ 1040-3 1160-3 984 (1000-1¼) 984 (1000-1½) 984 (1000-3) 1104 (1200-3)	
DYERS FIX MINIMUMS (DUAL VOR RECEIVERS OR DME REQUIRED)					
S-LOC 20R		440/24 385 (400-½)		440/35 385 (400-¾)	
S-LOC 20R		640-1 584 (600-1)		840-2¼ 1160-3 784 (800-2¼) 1104 (1200-3)	

SW-3, 04 JAN 2018 to 01 FEB 2018

SW-3, 04 JAN 2018 to 01 FEB 2018