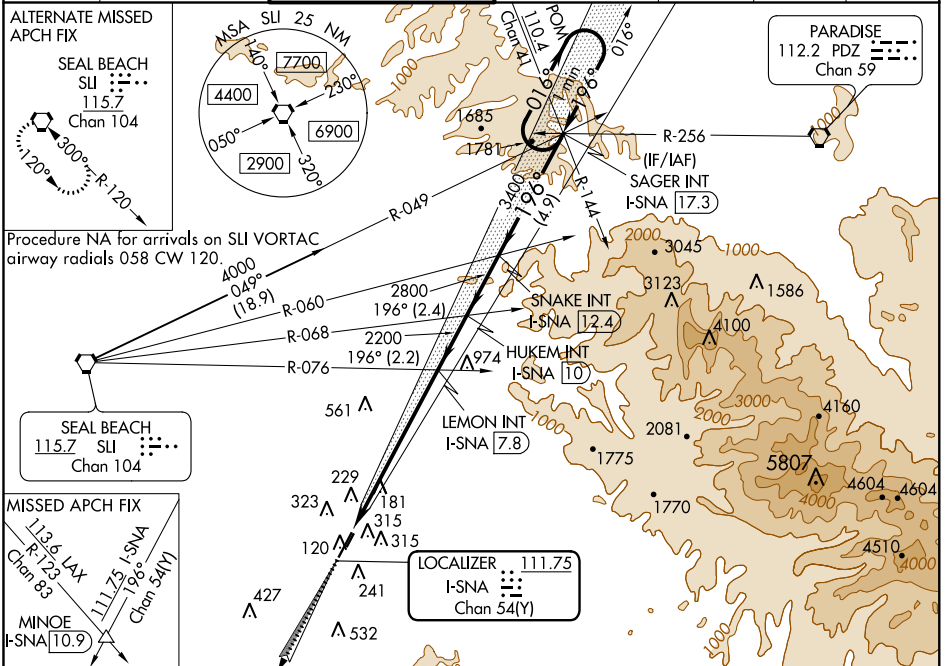


LOC/DME I-SNA 111.75 Chan 54(Y)	APP CRS 196°	Rwy Idg TDZE 55 Apt Elev 56	5701
---	------------------------	---	-------------

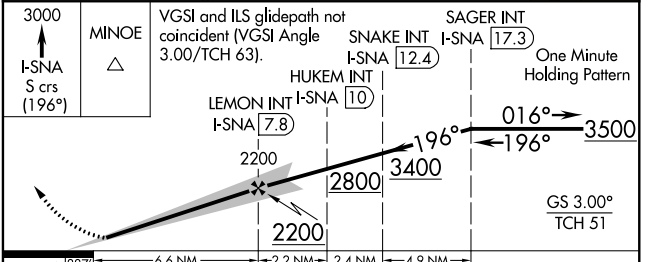
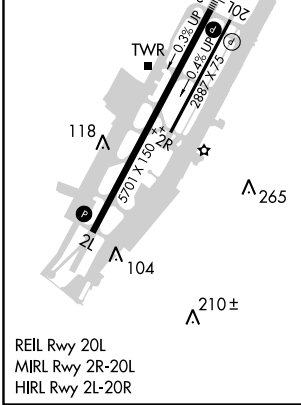
ILS RWY 20R (SA CAT I)

JOHN WAYNE AIRPORT-ORANGE COUNTY (SNA)

Requires specific OPSPEC, MSPEC, or LOA approval and use of HUD to DH. Procedure NA when control tower closed.	MALSR 	MISSED APPROACH: Climb to 3000 on I-SNA LOC south course (196°) to MINOE INT/I-SNA 10.9 DME.				
	D-ATIS 126.0	SOCAL APP CON 121.3 263.1	JOHN WAYNE TOWER ★ 126.8 (CTAF) 0 379.9	GND CON (EAST) 120.8 (WEST) 132.25	CLNC DEL 118.0	CPDLC



ELEV 56	TDZE 55
196° 6.6 NM from FAF	



CATEGORY	A	B	C	D
S-ILS 20R	RA 201/14 166 DA 221			

SA CATEGORY I ILS - SPECIAL AIRCREW & AIRCRAFT CERTIFICATION REQUIRED

SW-3, 04 JAN 2018 to 01 FEB 2018

SW-3, 04 JAN 2018 to 01 FEB 2018