

(HOBOW1.HOBOW) 17341

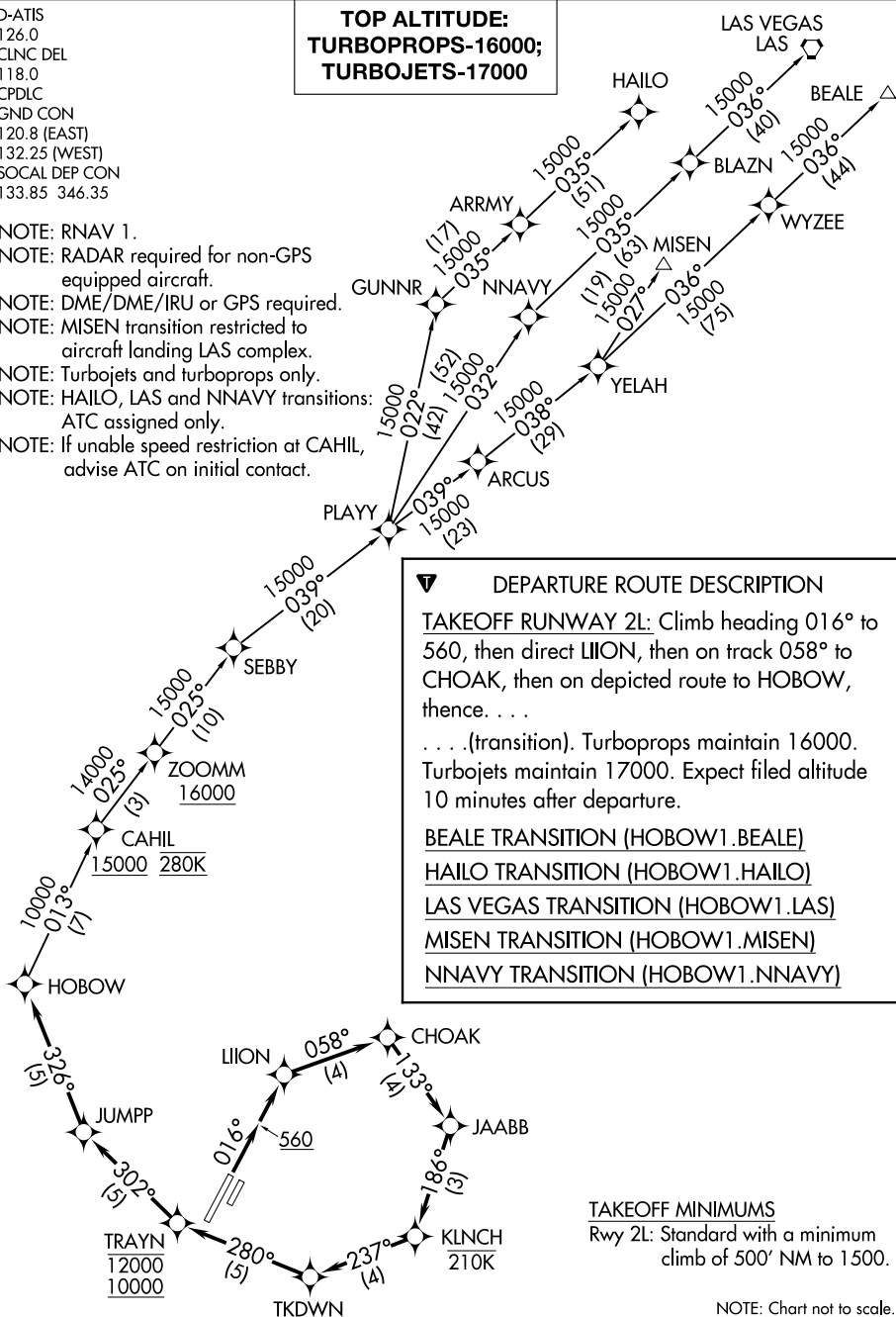
# HOBOW ONE DEPARTURE (RNAV)

JOHN WAYNE AIRPORT-ORANGE COUNTY (SNA)  
AL-377 (FAA) SANTA ANA, CALIFORNIA

D-ATIS  
126.0  
CLNC DEL  
118.0  
CPDLC  
GND CON  
120.8 (EAST)  
132.25 (WEST)  
SOCAL DEP CON  
133.85 346.35

**TOP ALTITUDE:  
TURBOPROPS-16000;  
TURBOJETS-17000**

- NOTE: RNAV 1.
- NOTE: RADAR required for non-GPS equipped aircraft.
- NOTE: DME/DME/IRU or GPS required.
- NOTE: MISEN transition restricted to aircraft landing LAS complex.
- NOTE: Turbojets and turboprops only.
- NOTE: HAILO, LAS and NNAVY transitions: ATC assigned only.
- NOTE: If unable speed restriction at CAHIL, advise ATC on initial contact.



**DEPARTURE ROUTE DESCRIPTION**

**TAKEOFF RUNWAY 2L:** Climb heading 016° to 560, then direct LIION, then on track 058° to CHOAK, then on depicted route to HOBOW, thence. . . .

. . . (transition). Turboprops maintain 16000. Turbojets maintain 17000. Expect filed altitude 10 minutes after departure.

BEALE TRANSITION (HOBOW1.BEALE)  
HAILO TRANSITION (HOBOW1.HAILO)  
LAS VEGAS TRANSITION (HOBOW1.LAS)  
MISEN TRANSITION (HOBOW1.MISEN)  
NNAVY TRANSITION (HOBOW1.NNAVY)

**TAKEOFF MINIMUMS**  
 Rwy 2L: Standard with a minimum climb of 500' NM to 1500.

NOTE: Chart not to scale.

SW-3, 04 JAN 2018 to 01 FEB 2018

SW-3, 04 JAN 2018 to 01 FEB 2018

**HOBOW ONE DEPARTURE (RNAV)**  
(HOBOW1.HOBOW) 27APR17

SANTA ANA, CALIFORNIA  
JOHN WAYNE AIRPORT-ORANGE COUNTY (SNA)