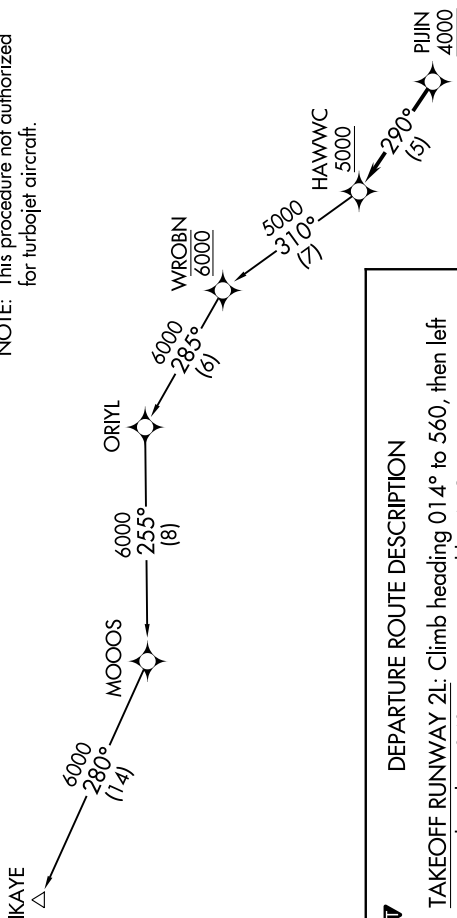


HAWWC TWO DEPARTURE (RNAV)

D-ATIS
126.0
CLNC DEL
118.0
CPDIC
GND CON
120.8 (EAST)
132.25 (WEST)
JOHN WAYNE TOWER*
126.8 379.9
SOCAL DEP CON
124.65 316.125



NOTE: RADAR required.
NOTE: RNAV 1.
NOTE: DME/DME/IRU or GPS required.
NOTE: This procedure not authorized for turbojet aircraft.



DEPARTURE ROUTE DESCRIPTION

TAKEOFF RUNWAY 2L: Climb heading 014° to 560, then left turn on heading 240° or as assigned by ATC, expect vectors to PIJIN, cross PIJIN at or above 4000, then on track 290° to cross HAWWC at or above 5000, thence

TAKEOFF RUNWAY 20R: Climb heading 194°, then on heading 210° or as assigned by ATC, expect vectors to PIJIN, cross PIJIN at or above 4000, then on track 290° to cross HAWWC at or above 5000, thence

. . . . on (transition). Maintain 6000. Expect higher altitude 10 minutes after departure.

TAKEOFF MINIMUMS
Rwys 2R, 20L: NA-ATC.
Rwy 2L: Standard.
Rwy 20R: Standard with minimum climb of 270' per NM to 1300.

NOTE: Chart not to scale.

TOP ALTITUDE:
6000