

RNAV (GPS) RWY 32

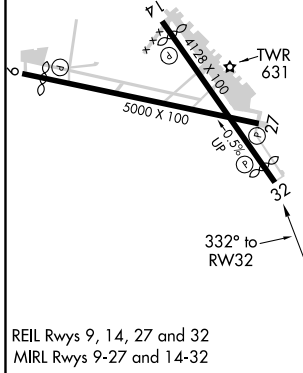
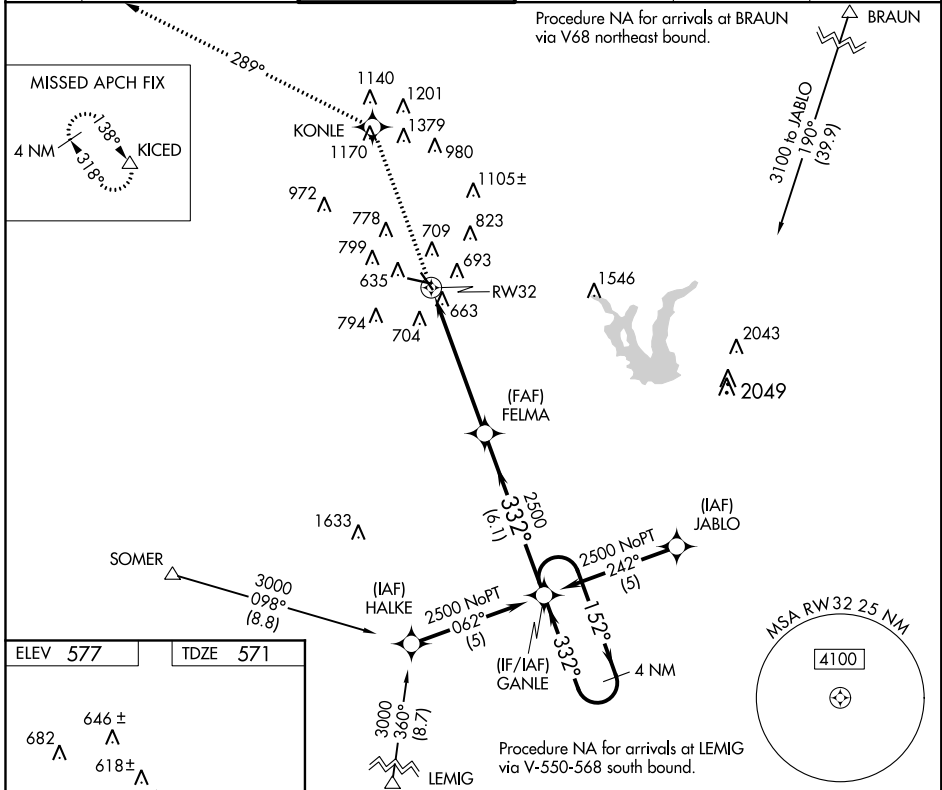
STINSON MUNI (SSF)

APP CRS 332°	Rwy Idg 3756
	TDZE 571
	Apt Elev 577

▼ When local altimeter setting not received, use San Antonio Intl altimeter setting and increase all MDAs 60 feet, and LNAV Cat C visibility ¼ mile.
▲ Helicopter visibility reduction below 1 SM NA. DME/DME RNP-0.3 NA.
 Night landing: Rwy 9, 14, 32 NA.

MISSED APPROACH: Climb to 4100 direct KONLE and via 289° track to KICED and hold.

ATIS 128.8	SAN ANTONIO APP CON 125.7 290.225	STINSON TOWER ★ 118.2 (CTAF) 0 379.9	GND CON 121.7 379.9	CLNC DEL 121.7	UNICOM 122.95
----------------------	---	--	-------------------------------	--------------------------	-------------------------



SC-3, 04 JAN 2018 to 01 FEB 2018

SC-3, 04 JAN 2018 to 01 FEB 2018