

MILET FOUR DEPARTURE (RNAV)

ATIS 128.8
CLNC DEL
121.7
GND CON
121.7 379.9
SAN ANTONIO DEP CON
125.7 290.225
STINSON TOWER*
118.2 379.9

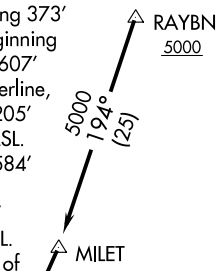
TAKEOFF OBSTACLES:

Rwy 9: Vehicle on road 285' from DER, 380' left of centerline, 15' AGL/584' MSL. Trees beginning 1653' from DER, 435' right of centerline, up to 70' AGL/629' MSL.

Rwy 14: Vehicle on road 114' from DER, on centerline extending 373' left of centerline, up to 15' AGL/564' MSL. Trees beginning 72' from DER, 79' right of centerline, up to 70' AGL/607' MSL. Trees beginning 232' from DER, 54' left of centerline, up to 70' AGL/618' MSL. Transmission line tower 4205' from DER, 133' right of centerline, 119' AGL/663' MSL.

Rwy 27: Fence 41' from DER, 30' right of centerline, 8' AGL/584' MSL. Vehicle on road, 108' from DER, 202' right of centerline, 15' AGL/584' MSL. Vehicle on road 123' from DER, 113' right of centerline, 15' AGL/596' MSL. Trees and poles beginning 229' from DER, 117' right of centerline, up to 70' AGL/645' MSL. Trees and poles beginning 599' from DER, 6' left of centerline, up to 70' AGL/634' MSL. Tanks beginning 1.3 NM from DER, 1338' right of centerline, 179' AGL/799' MSL. Building 1422' from DER, 432' right of centerline, 40' AGL/627' MSL. Building 2133' from DER, 36' left of centerline, 55' AGL/635' MSL.

Rwy 32: Fence 17' from DER, 80' left of centerline, 8' AGL/578' MSL. Vehicle on road 54' from DER, 199' left of centerline, 15' AGL/586' MSL. Trees beginning 164' from DER, 125' right of centerline, up to 70' AGL/639' MSL. Trees and poles beginning 43' from DER, 41' left of centerline, up to 75' AGL/668' MSL.



TAKEOFF MINIMUMS:

- Rwy 14, 32: Standard.
- Rwy 9: Standard with minimum climb of 225' per NM to 1900.
- Rwy 27: 300-1 3/4 or Standard with a minimum climb of 221' per NM to 900, or alternatively, with Standard takeoff minimums and a normal 200' per NM climb gradient, takeoff must occur no later than 1700' prior to DER.

- NOTE: RNAV 1.
- NOTE: RADAR required.
- NOTE: DME/DME/IRU or GPS required.
- NOTE: For non-GPS equipped aircraft SAT, THX, and COT DME's must be operational.



LAREDO LRD

TAKEOFF RUNWAY 9, 14, 27, 32:
Climb on assigned heading and altitude for RADAR vectors to RAYBN, thence. . . .
... On depicted route to LRD VORTAC. Expect filed altitude 10 minutes after departure.

NOTE: Chart not to scale.

SC-3, 04 JAN 2018 to 01 FEB 2018

SC-3, 04 JAN 2018 to 01 FEB 2018

MILET FOUR DEPARTURE (RNAV)