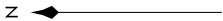


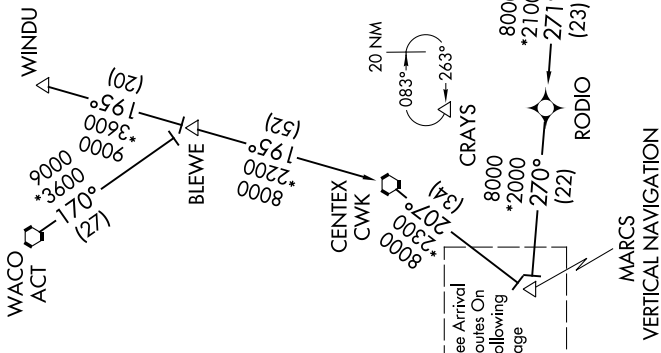
BRAUN TWO ARRIVAL (RNAV) Transition Routes

SAN ANTONIO, TEXAS

SAN ANTONIO APP CON
127.1 269.1
124.45 335.625
KELLY FLD ATIS
170.45 273.5
RANDOLPH AFB ATIS *
290.525
SAN ANTONIO INTL D-ATIS
118.9
STINSON MUNI ATIS
128.8



NOTE: RADAR Required.
NOTE: RNAV 1.
NOTE: DME/DME/IRU or GPS required.
NOTE: WAILN transition for Houston Terminal Area Departures only.



MARC'S
VERTICAL NAVIGATION
PLANNING INFORMATION
Turbojets: Expect 13000

NOTE: Chart not to scale

(CONTINUED ON FOLLOWING PAGE)

SC-3, 04 JAN 2018 to 01 FEB 2018

SC-3, 04 JAN 2018 to 01 FEB 2018

BRAUN TWO ARRIVAL (RNAV) Transition Routes

SAN ANTONIO, TEXAS