

WAAS CH <b>56435</b> <b>W18A</b>	APP CRS <b>184°</b>	Rwy Idg <b>4000</b> TDZE <b>547</b> Apt Elev <b>551</b>
--	------------------------	---

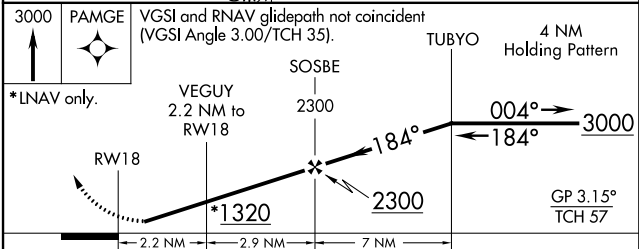
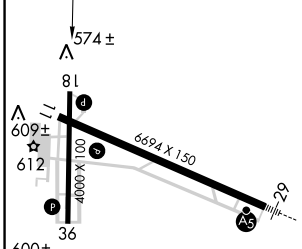
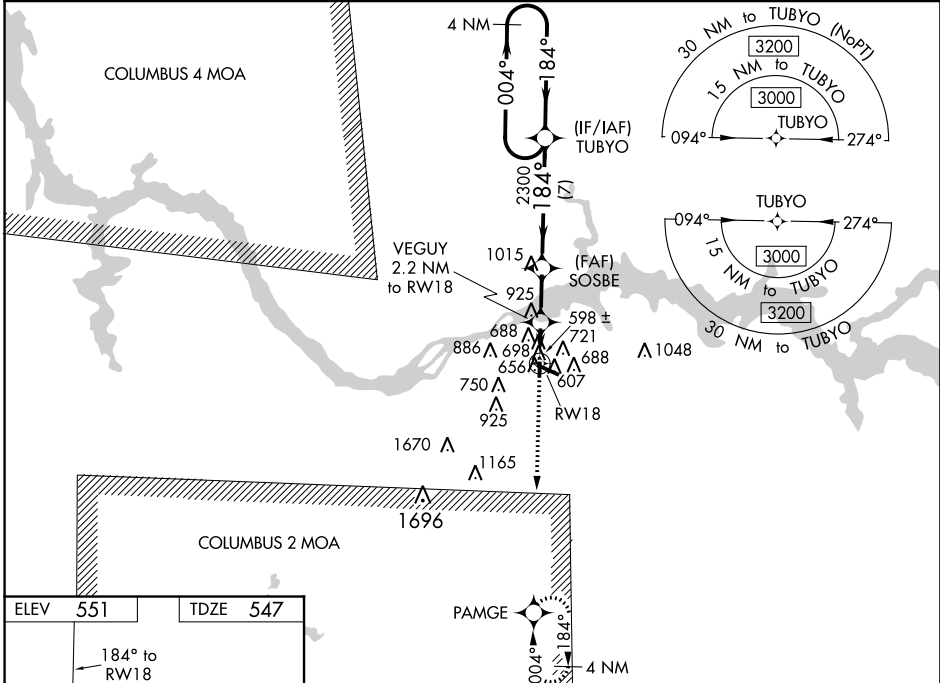
# RNAV (GPS) RWY 18

NORTHWEST ALABAMA RGNL (MSL)

**⚠** Baro-VNAV NA when using Decatur altimeter setting. For uncompensated Baro-VNAV systems, LNAV/VNAV NA below -4°C (25°F) or above 54°C (130°F). DME/DME RNP-0.3 NA.  
**⚠** Helicopter visibility reduction below 1 SM NA. Rwy 18 Straight-in and Circling Minimums NA at night. When local altimeter setting not received, use Decatur altimeter setting and increase LPV DA to 872, LNAV/VNAV DA to 1057 and all MDA 100 feet, increase LNAV/VNAV all Cats visibility and LNAV Cat C visibility ¼ mile, increase Circling Cat C visibility ½ mile.

**MISSED APPROACH:**  
Climb to 3000 direct PAMGE and hold.

ASOS <b>119.425</b>	MEMPHIS CENTER <b>120.8 307.0</b>	GCO <b>121.725</b>	UNICOM <b>123.05 (CTAF) 0</b>
------------------------	--------------------------------------	-----------------------	----------------------------------



CATEGORY	A	B	C	D
LPV DA		797-1	250 (300-1)	NA
LNAV/VNAV DA		982-1 <sup>3</sup> / <sub>8</sub>	435 (500-1 <sup>3</sup> / <sub>8</sub> )	NA
LNAV MDA	960-1	413 (500-1)	960-1 <sup>1</sup> / <sub>4</sub> 413 (500-1 <sup>1</sup> / <sub>4</sub> )	NA
<b>C</b> CIRCLING	1040-1	489 (500-1)	1280-2 729 (800-2)	NA

SE-4, 04 JAN 2018 to 01 FEB 2018

SE-4, 04 JAN 2018 to 01 FEB 2018