

WAAS CH <b>90518</b> <b>W11A</b>	APP CRS <b>117°</b>	Rwy Idg TDZE Apt Elev	<b>6694</b> <b>544</b> <b>551</b>
--	------------------------	-----------------------------	---

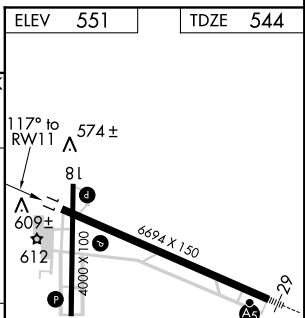
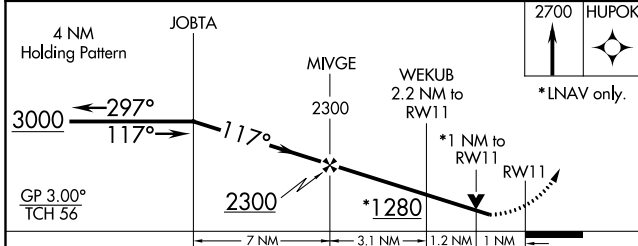
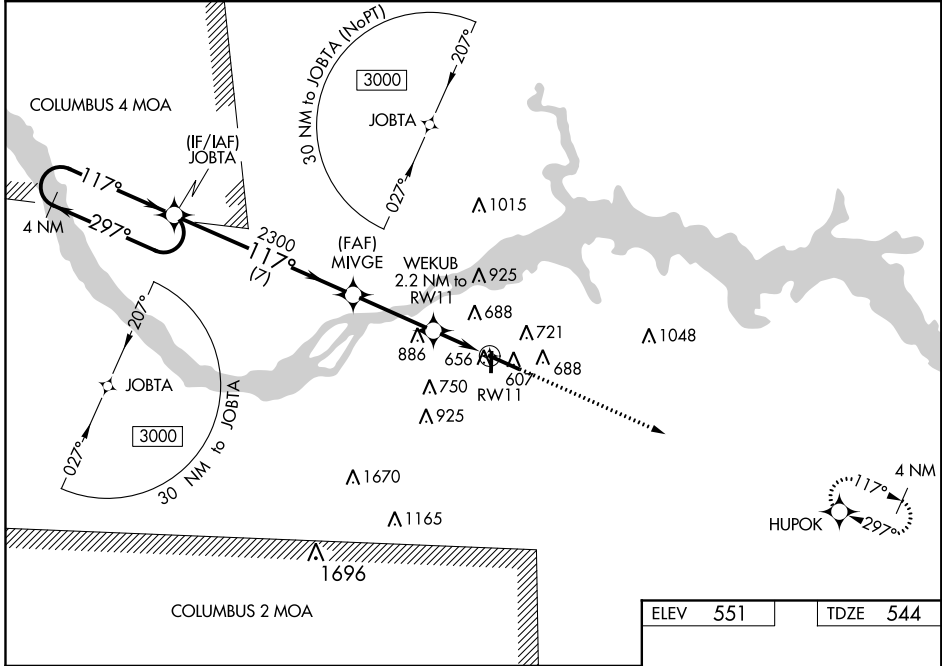
# RNAV (GPS) RWY 11

NORTHWEST ALABAMA RGNL (MSL)

**⚠** Circling to Rwy 18 NA at night. For uncompensated Baro-VNAV systems, LNAV/VNAV NA below -4°C (25°F) or above 54°C (130°F). DME/DME RNP-0.3 NA. When local altimeter setting not received use Decatur altimeter setting and increase LPV DA to 932 feet, LNAV/VNAV DA to 1023 feet and all MDA 100 feet; increase LPV all Cats visibility ¼ mile, LNAV/VNAV all Cats visibility ⅜ mile, LNAV Cat C and D visibility ⅜ mile and Circling Cat C and D visibility ½ mile. Baro-VNAV and VDP NA when using Decatur altimeter setting. Helicopter visibility reduction below ¾ SM NA.

**⚠** MISSED APPROACH: Climb to 2700 direct HUPOK and hold.

ASOS <b>119.425</b>	MEMPHIS CENTER <b>120.8 307.0</b>	GCO <b>121.725</b>	UNICOM <b>123.05 (CTAF) 0</b>
------------------------	--------------------------------------	-----------------------	----------------------------------



CATEGORY	A	B	C	D
LPV DA		851-1	307 (300-1)	
LNAV/VNAV DA		942-1¼	398 (400-1¼)	
LNAV MDA		920-1	376 (400-1)	
<b>C</b> CIRCLING	1040-1	489 (500-1)	1280-2 729 (800-2)	1280-2¼ 729 (800-2¼)

ELEV 551	TDZE 544
REIL Rwy 11 0	MIRL Rwy 18-36 1
	HIRL Rwy 11-29 0

SE-4, 04 JAN 2018 to 01 FEB 2018

SE-4, 04 JAN 2018 to 01 FEB 2018