

LOC I-MSL 109.7	APP CRS 297°	Rwy Idg 6694	TDZE 551
		Apt Elev 551	

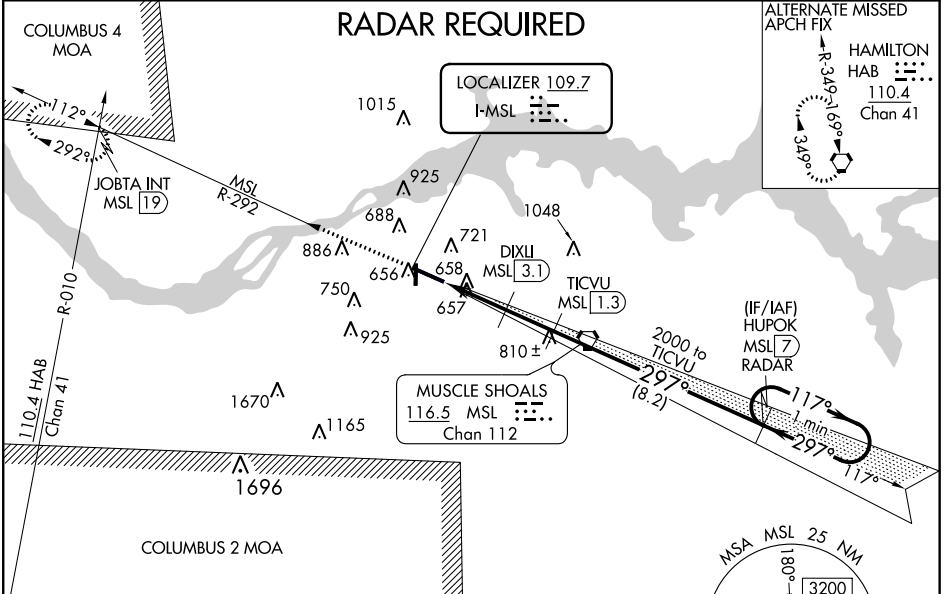
ILS Z or LOC/DME Z RWY 29

NORTHWEST ALABAMA RGNL (MSL)

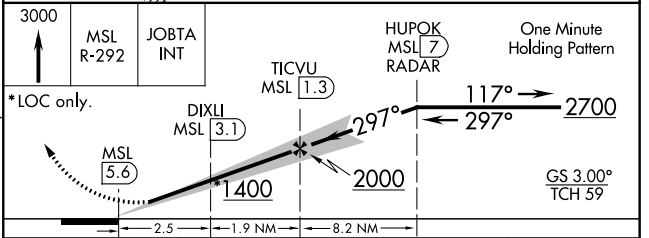
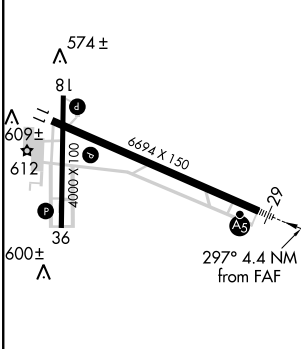
⚠ Circling to Rwy 18 NA at night. When local altimeter setting not received, use Decatur altimeter setting: increase DA to 833 feet and all MDA 100 feet; increase S-LOC 29 Cat C, D visibility 3/8 mile and Circling Cat C, D visibility 1/2 mile. DME from MSL VORTAC. Simultaneous reception of I-MSL and MSL DME required. For inop MALSR increase S-LOC 29 Cats C/D visibility to 1 mile. For inop MALSR when using Decatur altimeter setting, increase S-ILS 29 all Cats visibility to 3/8 mile, and increase LNAV Cats C/D to 1 1/8 mile.

MALSR MISSED APPROACH: Climb to 3000 on MSL VORTAC R-292 to JOBTA INT/MSL VORTAC 19 DME and hold.

ASOS 119.425	MEMPHIS CENTER 120.8 307.0	GCO 121.725	UNICOM 123.05 (CTAF)
------------------------	--------------------------------------	-----------------------	--------------------------------



ELEV 551	TDZE 551
----------	----------



REIL Rwy 11 **Ⓛ**

MIRL Rwy 18-36 **Ⓛ**

HIRL Rwy 11-29 **Ⓛ**

FAF to MAP 4.4 NM

Knots	60	90	120	150	180
Min:Sec	4:24	2:56	2:12	1:46	1:28

CATEGORY	A	B	C	D
S-ILS 29		751-1/2	200 (200+1/2)	
S-LOC 29	920-1/2	369 (400-1/2)	920-5/8	369 (400-5/8)
C CIRCLING	1040-1	489 (500-1)	1280-2	1280-2 1/4
			729 (800-2)	729 (800-2 1/4)

SE-4, 04 JAN 2018 to 01 FEB 2018

SE-4, 04 JAN 2018 to 01 FEB 2018