

ILS or LOC RWY 27

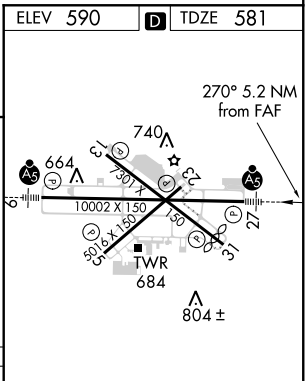
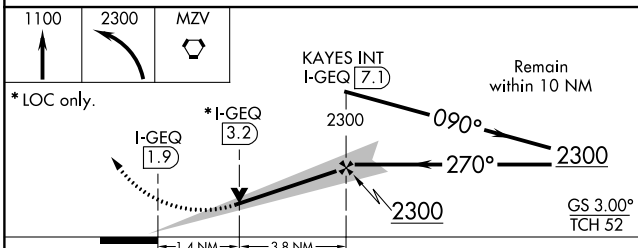
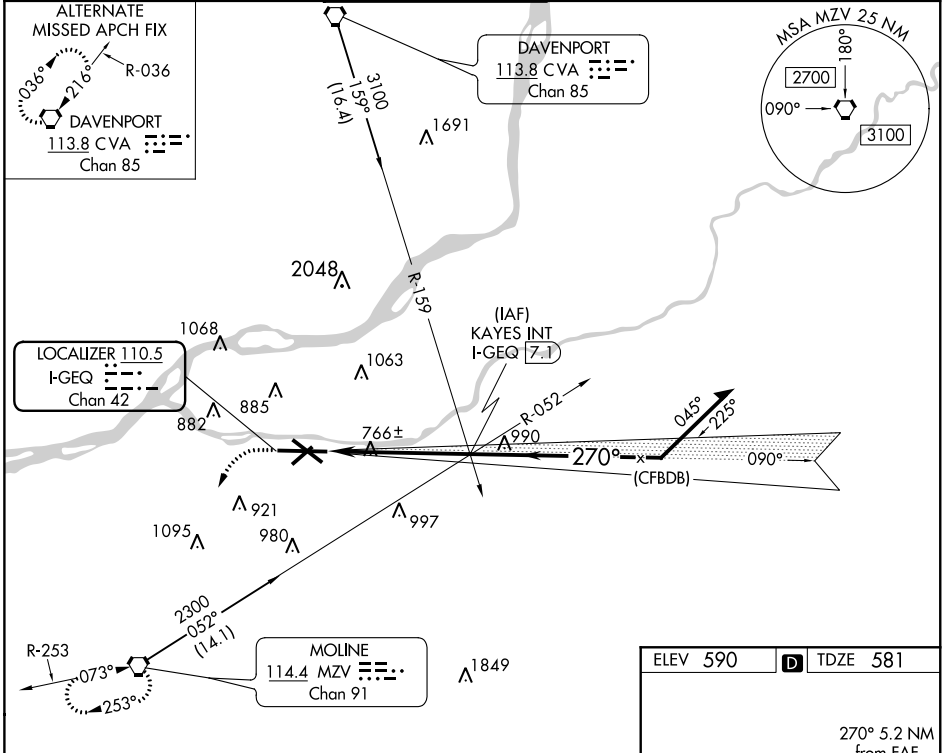
QUAD CITY INTL (MLI)

LOC/DME I-GEQ	APP CRS	Rwy Idg	10002
110.5	270°	TDZE	581
Chan 42		Apt Elev	590

⚠ Circling to Rwy 05/13/23 NA at night. When local altimeter setting not received, use Davenport altimeter setting and increase all DA 47 feet and all MDA 60 feet, increase S-LOC-27 and Circling Cat C/D visibility ¼ mile.
****** 1800 RVR authorized with use of FD or AP or HUD to DA.

MALSR
 MISSED APPROACH: Climb to 1100, then climbing left turn to 2300 direct MZV VORTAC and hold.

ATIS	QUAD CITY APP CON *	QUAD CITY TOWER *	GND CON	CLNC DEL	UNICOM
121.2	125.95 257.8	119.4 (CTAF) 0 269.55	121.9	124.05	122.95



CATEGORY	A	B	C	D
S-ILS 27	** 781/24 200 (200-½)			
S-LOC 27	1060/24 479 (500-½)		1060/40 479 (500-¾)	1060/50 479 (500-1)
CIRCLING	1140-1 550 (600-1)		1140-1½ 550 (600-1½)	1260-2 670 (700-2)

HIRL Rws 9-27 and 13-31
MIRL Rwy 5-23
REIL Rws 13 and 31 **1**

FAF to MAP 5.2 NM					
Knots	60	90	120	150	180
Min:Sec	5:12	3:28	2:36	2:05	1:44

EC-3, 04 JAN 2018 to 01 FEB 2018

EC-3, 04 JAN 2018 to 01 FEB 2018