

KAYOH SEVEN ARRIVAL

AL-236 (FAA)

LONG BEACH, CALIFORNIA

SW-3, 04 JAN 2018 to 01 FEB 2018

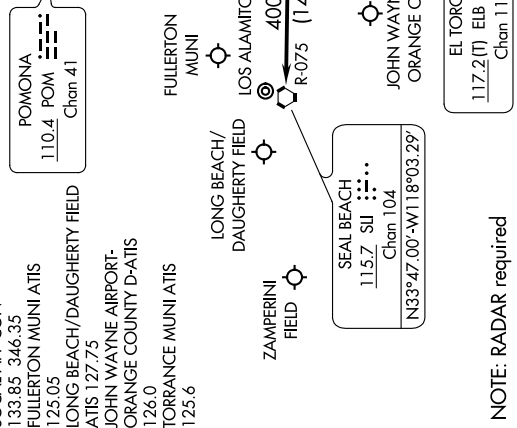
ARRIVAL ROUTE DESCRIPTION

HECTOR TRANSITION (HEC.KAYOH7): From over HEC VORTAC on HEC R-211 to BULGY INT then on R-211 and PDZ R-030 to DAWNA INT, then on HDF R-353 to HDF VOR, then on HDF R-257 to FRETS INT, then on HDF R-257 and SLI R-075 to KAYOH INT. Thence. . .

PALM SPRINGS TRANSITION (PSP.KAYOH7): From over PSP VORTAC on PSP R-260 to BANDS INT, then on HDF R-054 to HDF VOR, then on HDF R-257 to FRETS INT, then on HDF R-257 and SLI R-075 to KAYOH INT. Thence. . .

. . . from over KAYOH on SLI R-075 to JOGIT INT, then on SLI R-075 to SLI VORTAC, expect RADAR vectors to final approach course.

- SOCAL APP CON 133.85 346.35
- FULLERTON MUNI ATIS 125.05
- LONG BEACH/DAUGHERTY FIELD ATIS 127.75
- JOHN WAYNE AIRPORT-ORANGE COUNTY D-ATIS 126.0
- TORRANCE MUNI ATIS 125.6



NOTE: RADAR required
NOTE: Chart not to scale.

KAYOH SEVEN ARRIVAL

LONG BEACH, CALIFORNIA

SW-3, 04 JAN 2018 to 01 FEB 2018