

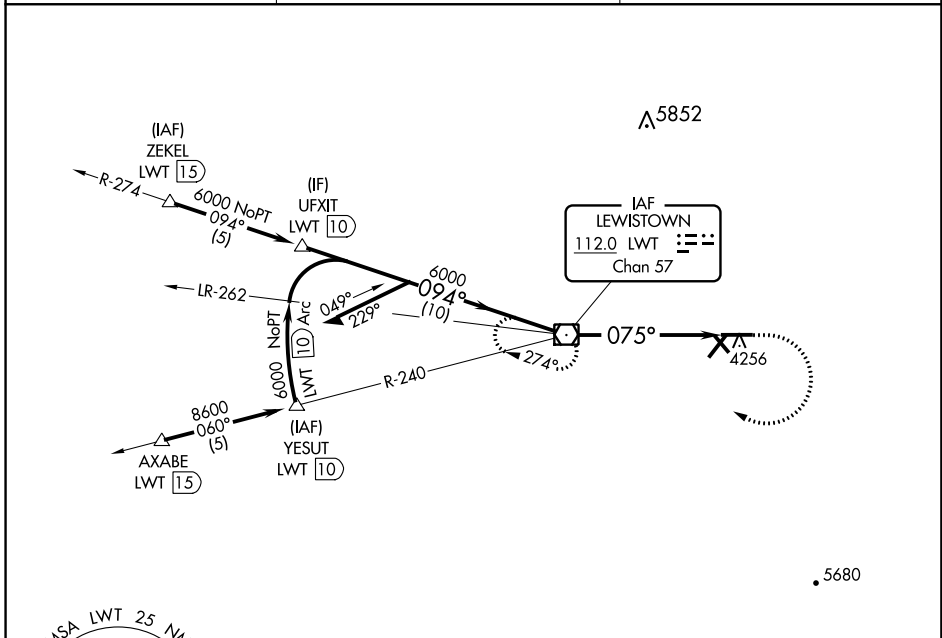
VOR/DME LWT <b>112.0</b> Chan <b>57</b>	APP CRS <b>075°</b>	Rwy Idg TDZE <b>4129</b> Apt Elev <b>4170</b>	<b>6100</b>
---	------------------------	---	-------------

# VOR RWY 8

LEWISTOWN MUNI (LWT)

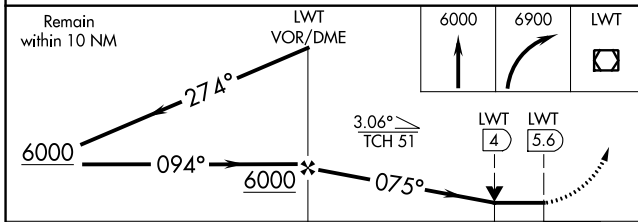
**▲** MISSED APPROACH: Climb to 6000 then climbing right turn to 6900 direct LWT VOR/DME and hold.

ASOS <b>118.375</b>	GREAT FALLS RADIO <b>122.2</b>	UNICOM <b>123.0 (CTAF)</b> <b>📻</b>
------------------------	-----------------------------------	--

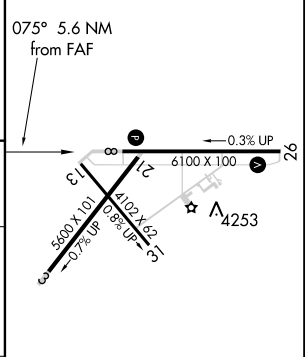


NW-1, 04 JAN 2018 to 01 FEB 2018

NW-1, 04 JAN 2018 to 01 FEB 2018



ELEV 4170	<b>D</b>	TDZE 4129
-----------	----------	-----------



CATEGORY	Remain within 10 NM		LWT VOR/DME	
	A	B	C	D
S-8	4680-1	551 (600-1)	4680-1 <sup>5</sup> / <sub>8</sub>	551 (600-1 <sup>5</sup> / <sub>8</sub> )
<b>C</b> CIRCLING	4680-1 510 (600-1)	4820-1 650 (700-1)	4980-2 <sup>1</sup> / <sub>4</sub> 810 (900-2 <sup>1</sup> / <sub>4</sub> )	5240-3 1070 (1100-3)

REIL Rwys 8 and 26 **📻**  
MIRL Rwys 3-21, 8-26 and 13-31 **📻**

FAF to MAP 5.6 NM

Knots	60	90	120	150	180
Min:Sec	5:36	3:44	2:48	2:14	1:52