

WAAS CH <b>86700</b> <b>W08A</b>	APP CRS <b>079°</b>	Rwy Idg <b>6100</b> TDZE <b>4129</b> Apt Elev <b>4170</b>
--	------------------------	---

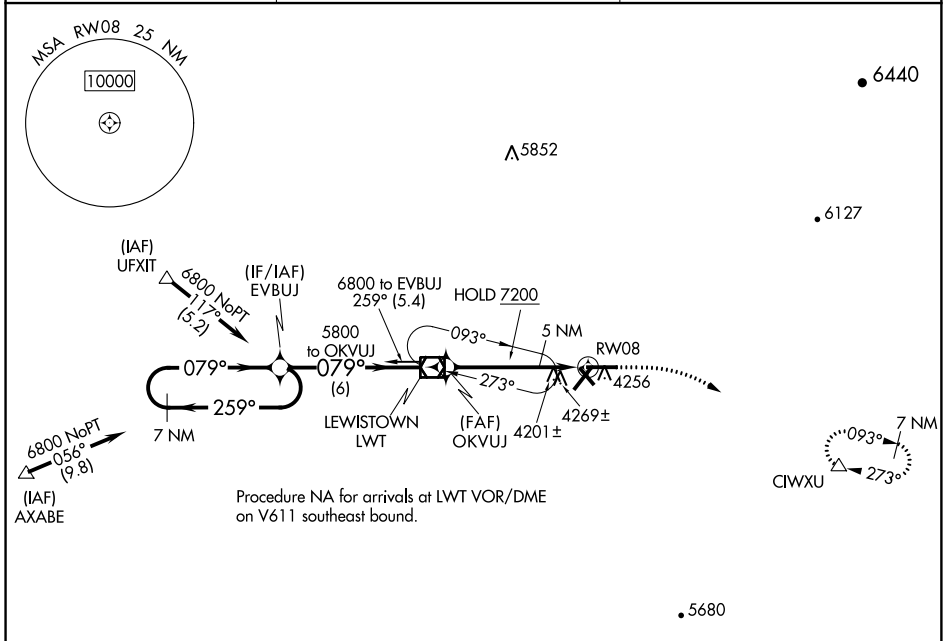
# RNAV (GPS) RWY 8

LEWISTOWN MUNI (LWT)

**⚠** For uncompensated Baro-VNAV systems, LNAV/VNAV NA below -26°C (-14°F) or above 50°C (123°F).  
DME/DME RNP-0.3 NA.

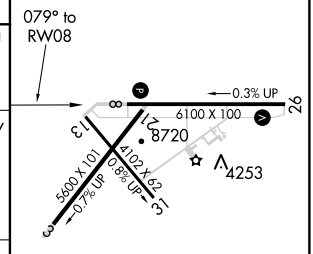
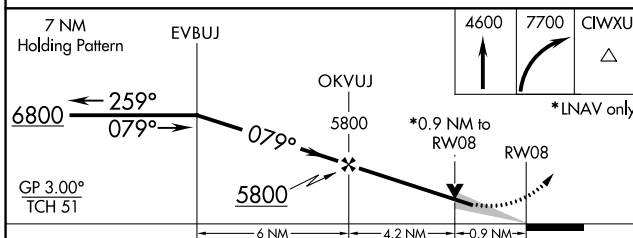
**MISSED APPROACH:** Climb to 4600, then climbing right turn to 7700 direct CIWXU and hold, continue climb-in-hold to 7700.

ASOS <b>118.375</b>	GREAT FALLS RADIO <b>122.2</b>	UNICOM <b>123.0 (CTAF)</b>
------------------------	-----------------------------------	-------------------------------

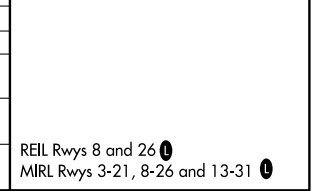


Procedure NA for arrivals at LWT VOR/DME on V611 southeast bound.

ELEV 4170	<b>D</b> TDZE 4129
-----------	--------------------



CATEGORY	A	B	C	D
LPV DA		4379- <sup>3</sup> / <sub>4</sub>	250 (300- <sup>3</sup> / <sub>4</sub> )	
LNAV/VNAV DA		4419- <sup>7</sup> / <sub>8</sub>	290 (300- <sup>7</sup> / <sub>8</sub> )	
LNAV MDA		4460-1	331 (300-1)	
<b>C</b> CIRCLING	4680-1 510 (600-1)	4820-1 650 (700-1)	4980-2 <sup>1</sup> / <sub>4</sub> 810 (900-2 <sup>1</sup> / <sub>4</sub> )	5240-3 1070 (1100-3)



NW-1, 04 JAN 2018 to 01 FEB 2018

NW-1, 04 JAN 2018 to 01 FEB 2018