

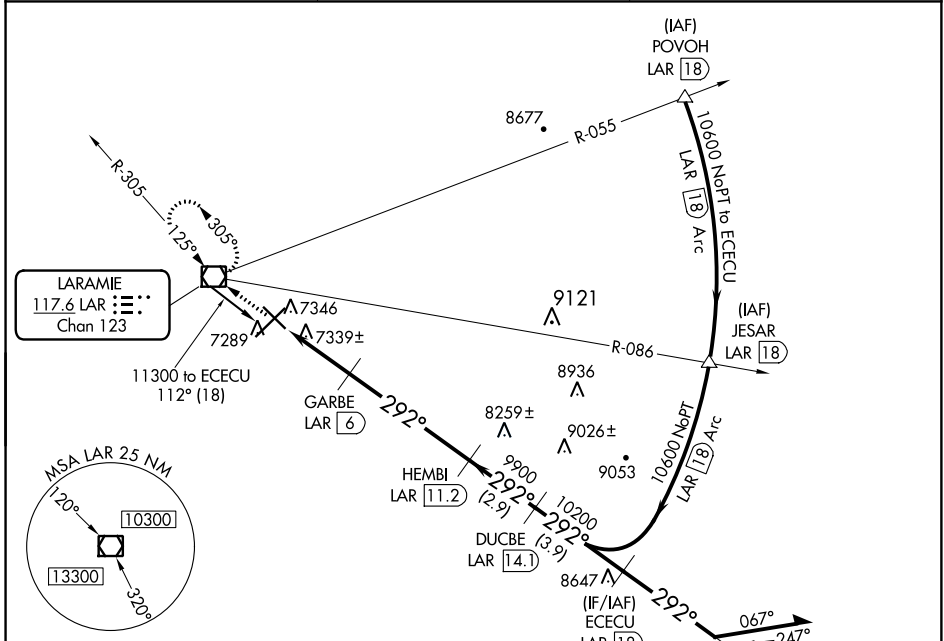
VOR/DME LAR <b>117.6</b> Chan 123	APP CRS <b>292°</b>	Rwy Idg TDZE Apt Elev <b>6300</b> <b>7278</b> <b>7284</b>
---	------------------------	--

# VOR/DME RWY 30

LARAMIE RGNL (L.A.R.)

-35°C	ODALS 	MISSED APPROACH: Climb to 9600 direct LAR VOR/DME and hold, continue climb-in-hold to 9600.
-------	-----------	---

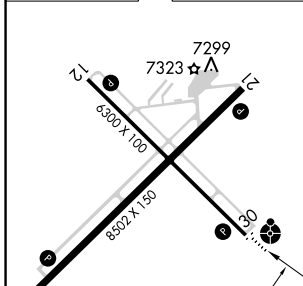
ASOS <b>135.475</b>	DENVER CENTER <b>125.9 284.7</b>	UNICOM <b>123.05 (CTAF) 0</b>
------------------------	-------------------------------------	----------------------------------



NW-1, 04 JAN 2018 to 01 FEB 2018

NW-1, 04 JAN 2018 to 01 FEB 2018

ELEV 7284	<b>D</b>	TDZE 7278
-----------	----------	-----------



REIL Rws 3, 12 and 21	MIRL Rws 3-21 and 12-30
-----------------------	-------------------------

9600	LAR	ECECU LAR 18	Remain within 10 NM
8220	8800	9900	10200
0.9	2 NM	5.2 NM	2.9 NM
LAR 3.1	LAR 4	GARBE LAR 6	HEMBI LAR 11.2
LAR 14.1	LAR 18	LAR 28.8	
3.00°	TCH 41	292°	10600
112°	10600	10600	10600
CATEGORY	A	B	C
S-30	7600-3/4	322 (400-3/4)	7600-1 322 (400-1)
CIRCLING	7660-1 376 (400-1)	7740-1 456 (500-1)	7740-1 1/2 456 (500-1 1/2) 7840-2 556 (600-2)