

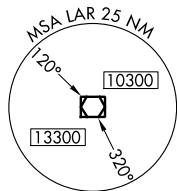
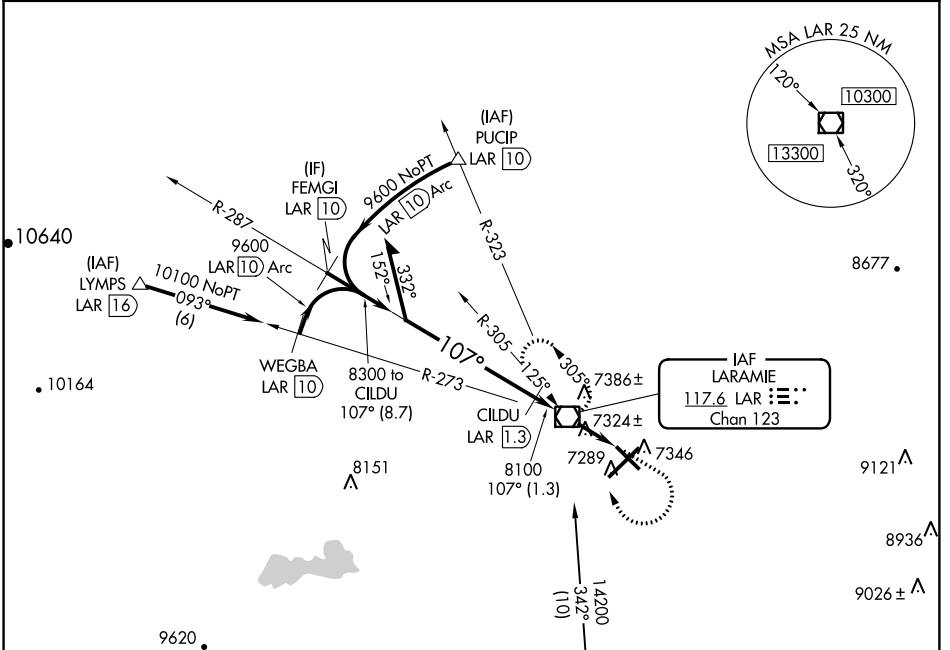
VOR/DME LAR 117.6 Chan 123	APP CRS 107°	Rwy Idg TDZE Apt Elev	6300 7275 7284
---	------------------------	-----------------------------	---

VOR/DME RWY 12

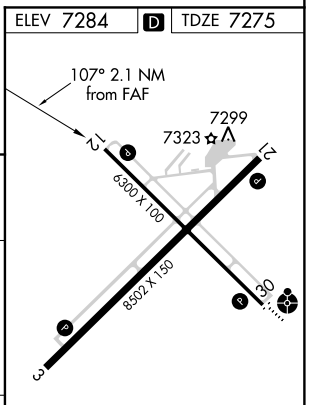
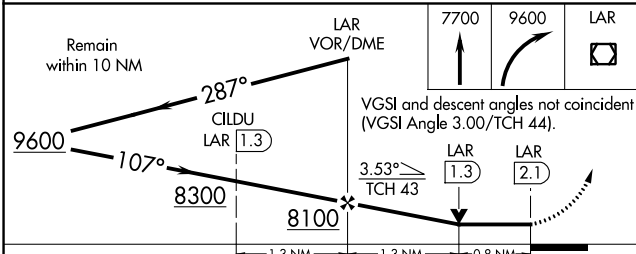
LARAMIE RGNL (LAR)

MISSED APPROACH: Climb to 7700 then climbing right turn to 9600 direct LAR VOR/DME and hold, continue climb-in-hold to 9600.

ASOS 135.475	DENVER CENTER 125.9 284.7	UNICOM 123.05 (CTAF)
------------------------	-------------------------------------	--------------------------------



ELEV 7284	TDZE 7275
-----------	-----------



CATEGORY	A	B	C	D
S-12	7580-1 305 (300-1)			
CIRCLING	7660-1 376 (400-1)	7740-1 456 (500-1)	7740-1½ 456 (500-1½)	7840-2 556 (600-2)

REIL Rwy 3, 12 and 21
MIRL Rwy 3-21 and 12-30

NW-1, 04 JAN 2018 to 01 FEB 2018

NW-1, 04 JAN 2018 to 01 FEB 2018