

WAAS CH <b>70600</b> <b>W12A</b>	APP CRS <b>122°</b>	Rwy Idg TDZE Apt Elev	<b>6300</b> <b>7275</b> <b>7284</b>
--	------------------------	-----------------------------	---

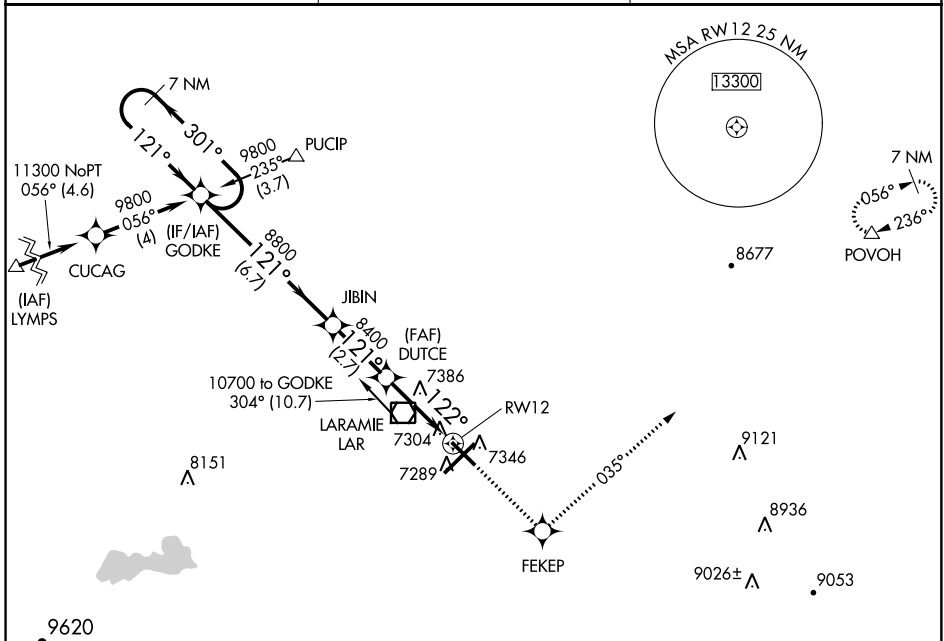
# RNAV (GPS) RWY 12

LARAMIE RGNL (L.A.R.)

**▽** DME/DME RNP-0.3 NA.  
**⊠** -35°C For uncompensated Baro-VNAV systems, LNAV/VNAV NA below -29°C (-20°F) or above 34°C (93°F).

**MISSED APPROACH:** Climb to 10700 direct FEKEP and via 035° track to POVOH and hold.

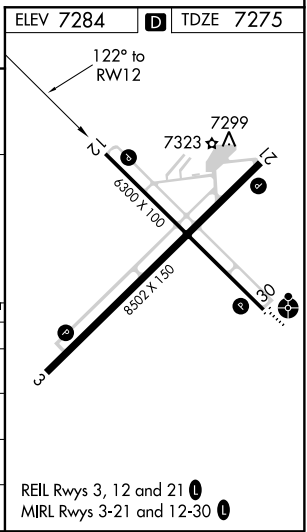
ASOS <b>135.475</b>	DENVER CENTER <b>125.9 284.7</b>	UNICOM <b>123.05</b> (CTAF) <b>Ⓛ</b>
------------------------	-------------------------------------	---



NW-1, 04 JAN 2018 to 01 FEB 2018

NW-1, 04 JAN 2018 to 01 FEB 2018

7 NM Holding Pattern		GODKE	10700	FEKEP	tr 035°	POVOH
9800 ← 301°		→ 121°		*LNAV only		
GP 3.00°		8800		*1.2 NM to RW12		
TCH 43		8400		RW12		
		6.7 NM	2.7 NM	2.2 NM	1.2	
CATEGORY	A	B	C	D		
LPV DA	7525-1		250 (300-1)			
LNAV/VNAV DA	7622-1¼		347 (400-1¼)			
LNAV MDA	7700-1	425 (500-1)		7700-1¼ 425 (500-1¼)		
CIRCLING	7700-1¼ 416 (500-1¼)	7740-1¼ 456 (500-1¼)	7740-1½ 456 (500-1½)	7840-2 556 (600-2)		



REIL Rwy 3, 12 and 21 **Ⓛ**  
MIRL Rwy 3-21 and 12-30 **Ⓛ**