

WAAS CH 86825 W20A	APP CRS 199°	Rwy Idg TDZE Apt Elev	3500 1789 1789
--	------------------------	-----------------------------	---

RNAV (GPS) RWY 20

MARTIN CAMPBELL FIELD (1A3)

NA DME/DME RNP-0.3 NA. Use Western Carolina Rgnl altimeter setting, when not received, use Dalton Muni altimeter setting and increase all MDA 160 feet. Procedure NA at night. Rwy 20 helicopter visibility reduction below 1 SM NA.

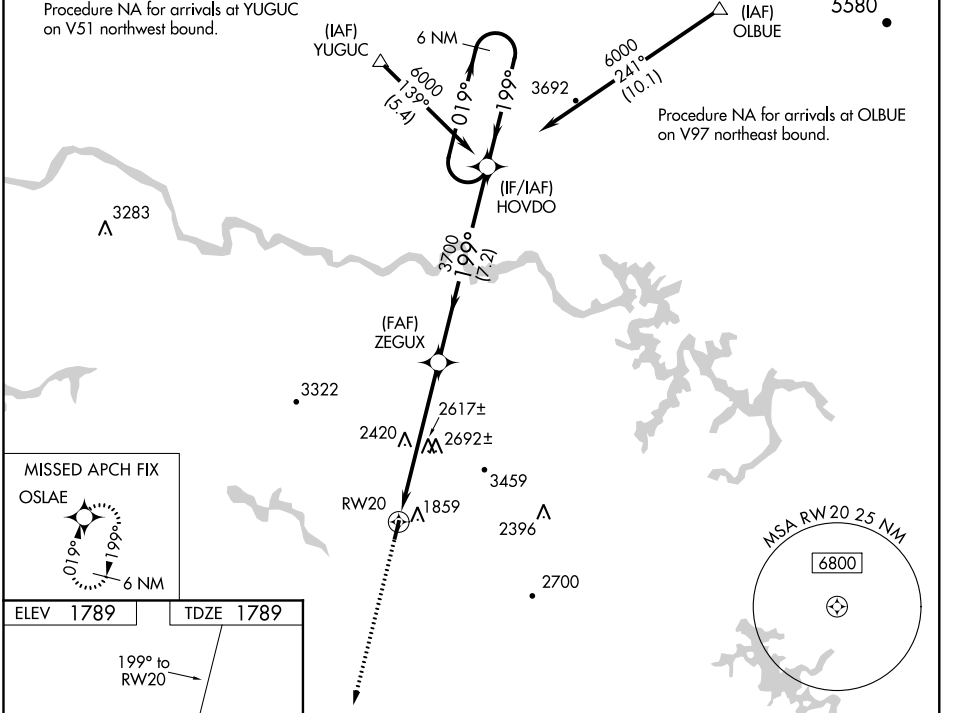
MISSED APPROACH: Climb to 6000 direct OSLAE and hold, continue climb in hold to 6000.

ATLANTA CENTER
133.1 342.425

(CTAF)
122.9

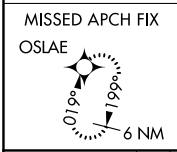
Procedure NA for arrivals at YUGUC on V51 northwest bound.

Procedure NA for arrivals at OLBUE on V97 northeast bound.

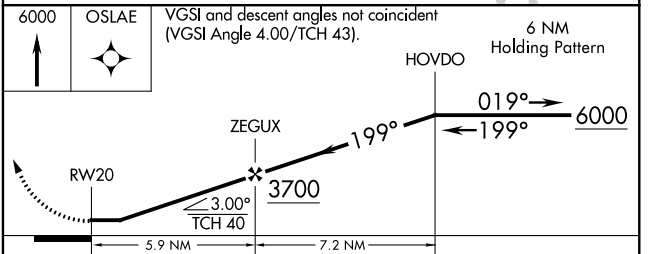
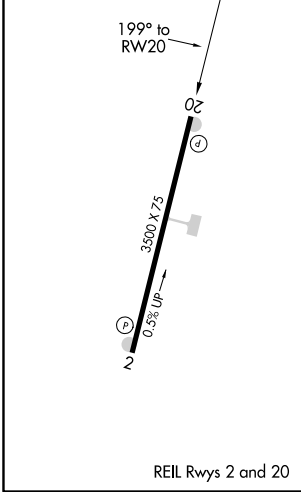


SE-1, 07 DEC 2017 to 04 JAN 2018

SE-1, 07 DEC 2017 to 04 JAN 2018



ELEV 1789	TDZE 1789
-----------	-----------



CATEGORY	A	B	C	D
LP MDA	2940-1¼ 1151 (1200-1¼)	2940-1½ 1151 (1200-1½)	2940-3 1151 (1200-3)	NA
LNAV MDA	3020-1¼ 1231 (1300-1¼)	3020-1½ 1231 (1300-1½)	3020-3 1231 (1300-3)	NA
CIRCLING	3020-1¼ 1231 (1300-1¼)	3020-1½ 1231 (1300-1½)	3020-3 1231 (1300-3)	NA